

JuLI™

Smart fluorescent
cell analyzer

User Guide for Wi-Fi connection

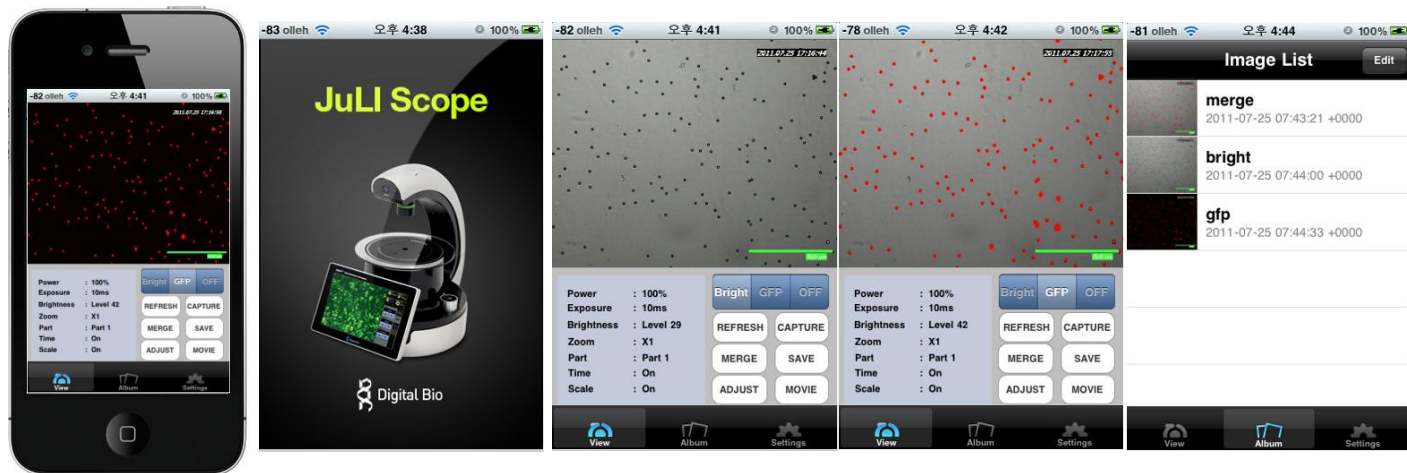


Table of Contents – whole process

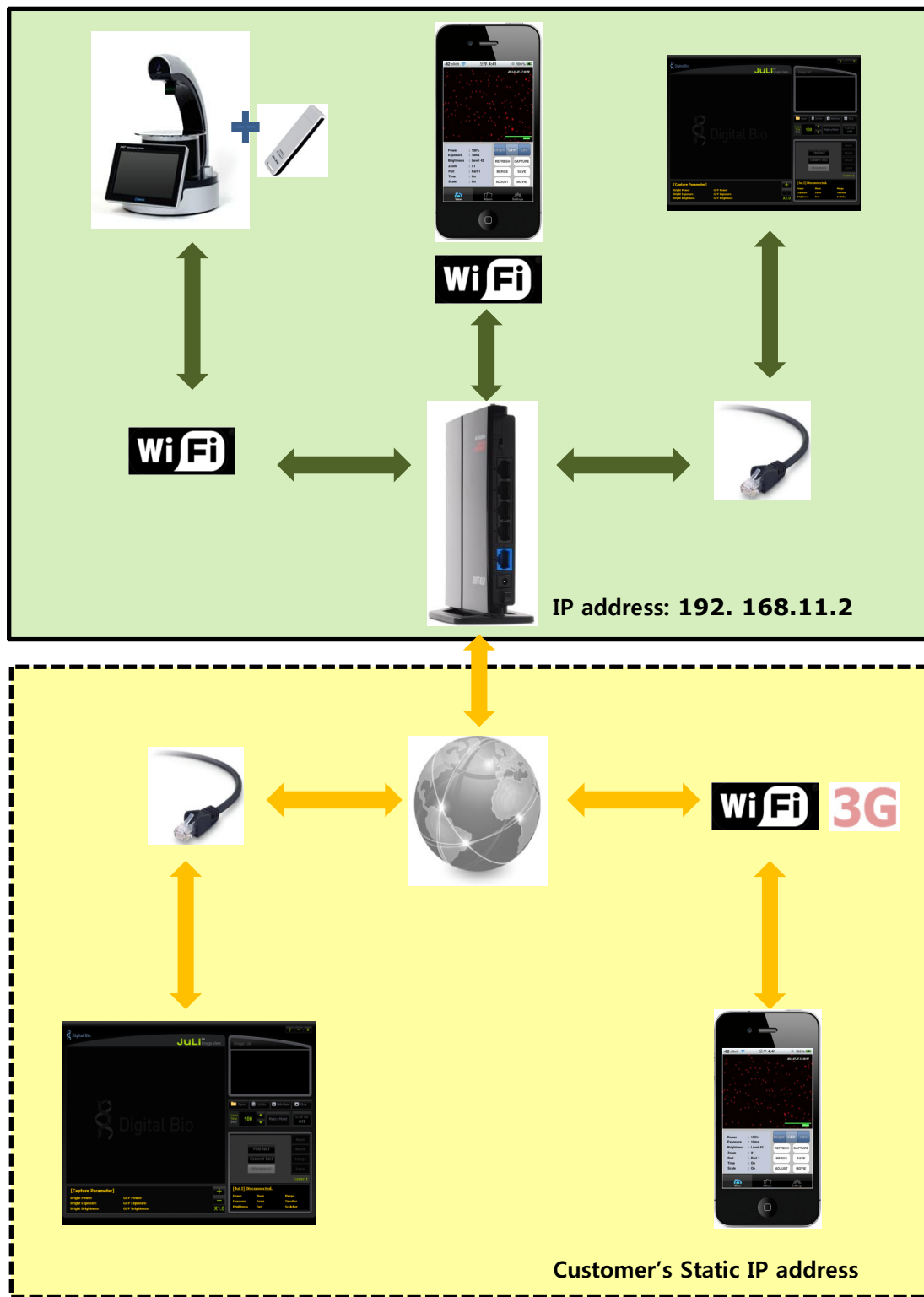
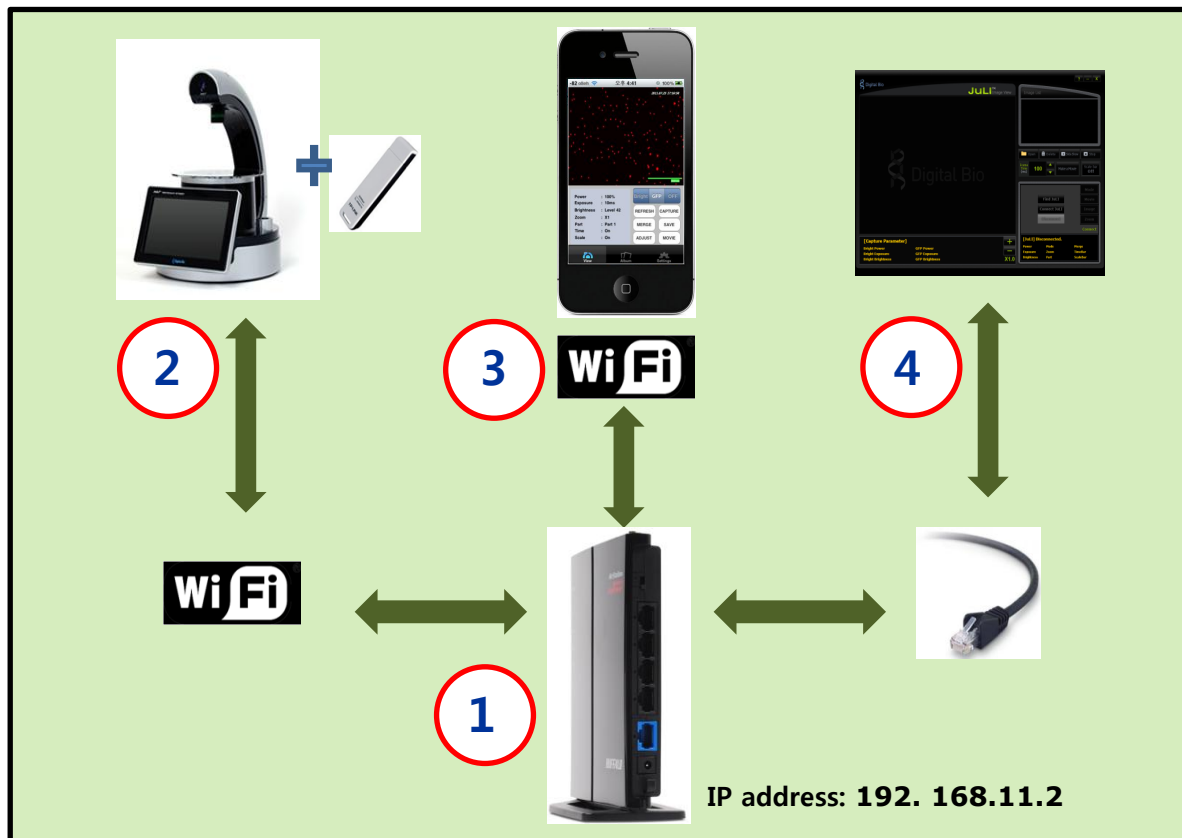
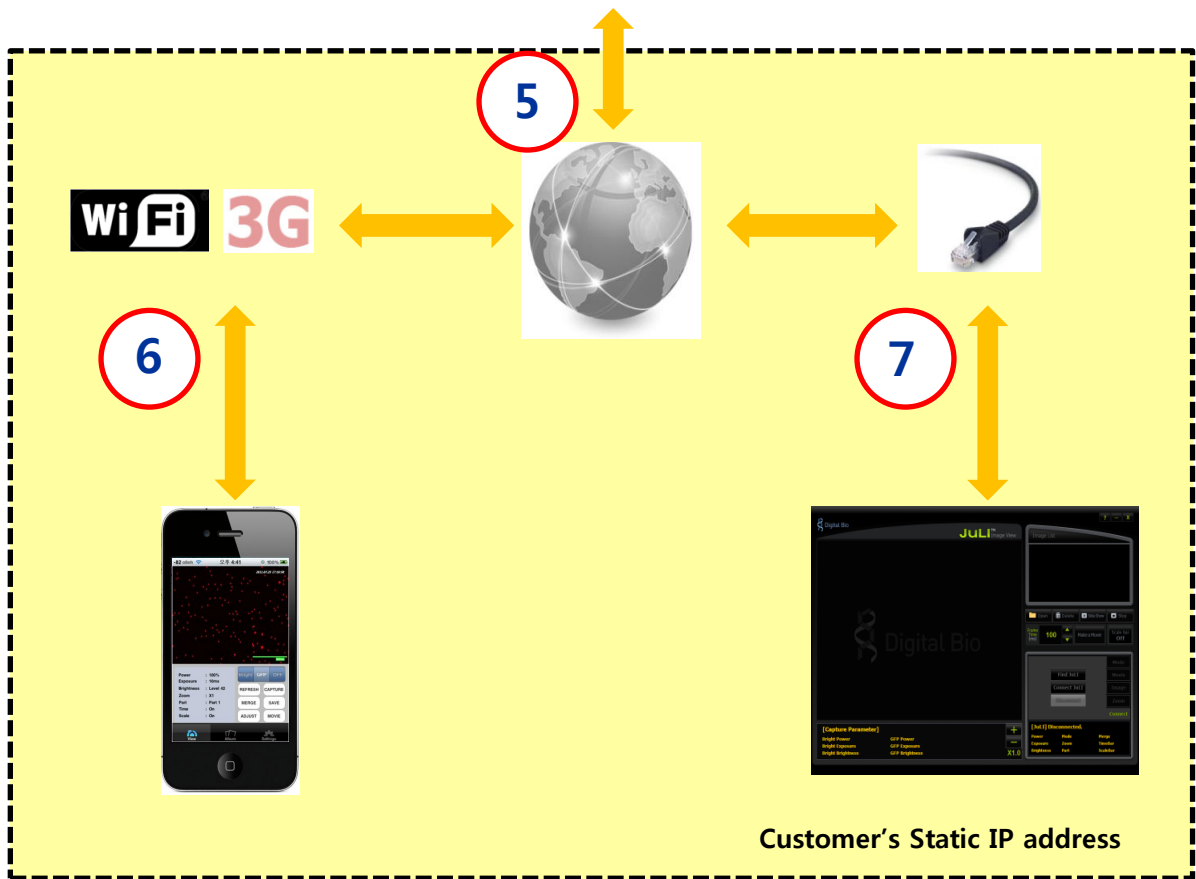


Table of Contents – Wi-Fi only in the laboratory



| | | | |
|---|---|--|---|
| <p>1</p> <p>AP device setup</p> <p>(page 5)</p> | <p>2</p> <p>Connection setting between JuLI & AP device</p> <p>(page 6)</p> | <p>3</p> <p>JuLI scope from iPhone</p> <p>(page 7)</p> | <p>4</p> <p>JuLI PC software</p> <p>(page 8~13)</p> |
|---|---|--|---|

Table of Contents – 3G & Wi-Fi at home



5

**AP device
setup for
3G connection**

(page 14~18)

6

**JuLI scope
from iPhone**

(page 19)

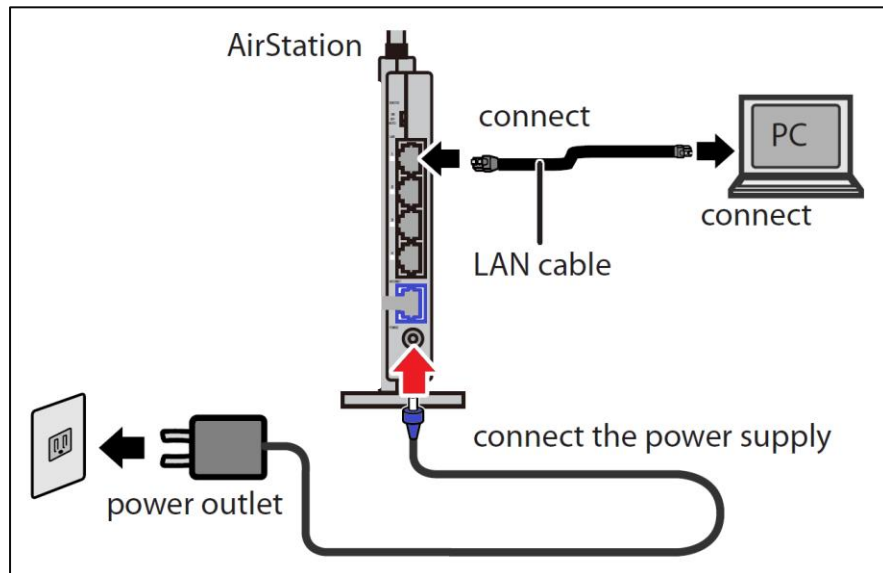
7

**JuLI PC
software**

(page 20)

Operation, AP device setup

1. Connect the AP Device's LAN port to your computer with the LAN cable.
3. Turn on the AP Device, wait 60 seconds
4. Confirm that the devices are connected correctly as shown below.



Operation, Connection setting between JuLI-AP device

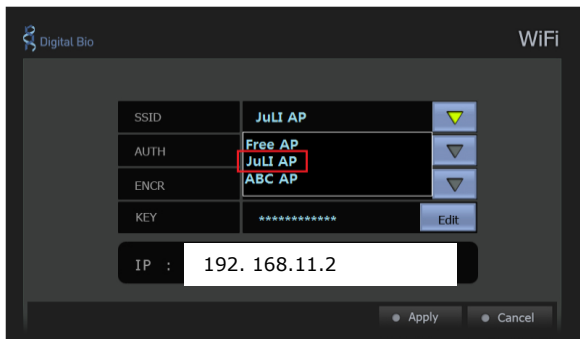
1. Turn on the JuLI and connect the wireless USB adapter to the slot of the JuLI.



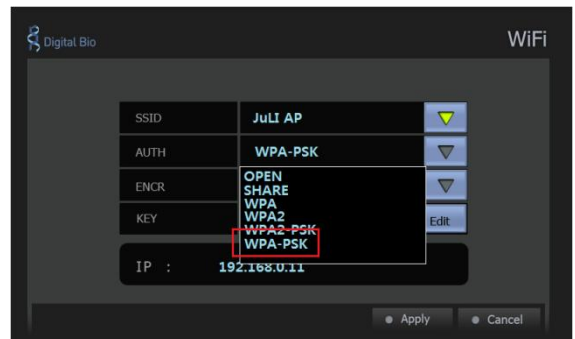
Wireless USB adapter

2. Set-up

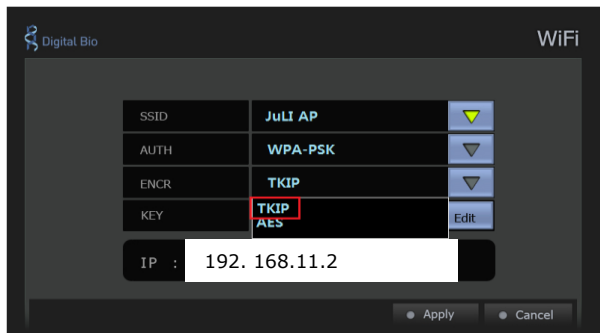
A. Choice the JuLI AP in SSID section.



B. Choice [WPA-PSK] in AUTH section.



C. Choice [TKIP] in ENCR section.



3. Check the IP address: 192. 168. 11. 2

4. Click 'Apply' and wait.

4. If you want to check the status of the connection, check IP status on Wi-Fi menu. Network is not Configured!! – Check whether the set information of the AP device is correct or not.

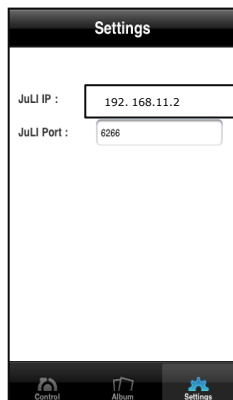
Operation, JuLI scope from iPhone

1. Download a JuLI app. (JuliScope) from the Apple store (iTunes).

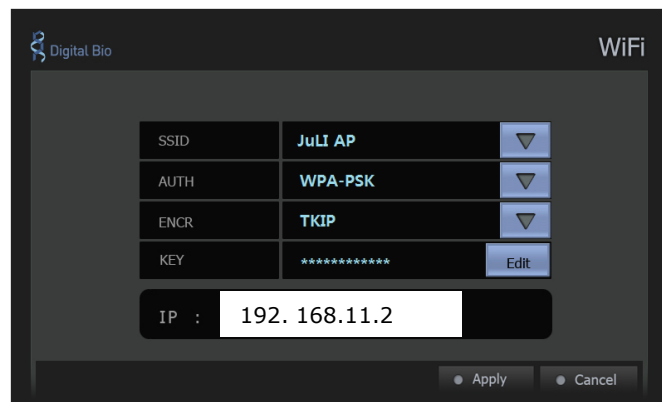


2. Change the Wi-Fi network from your network to **JULI**.
4. Click the JuliScope app. on the iPhone.
5. Press the Setting button to check the JuLI IP address on the JuLI app.
3. Double-check the IP address on the Wi-Fi menu of the JuLI main device.

To connect the Wi-Fi module, please enter the **192.168.11.2** for IP address to JuLI app.
 To connect the 3G cable, please enter customer's static IP address to JuLI app.



JuLI app.



The Wi-Fi menu of the JuLI main device

4. When you finish the setting for Wi-Fi, click the control button on the JuLI app.
5. Click the button "Connect to JuLI" and enjoy!

Hear are the latest features of JuLI's App.

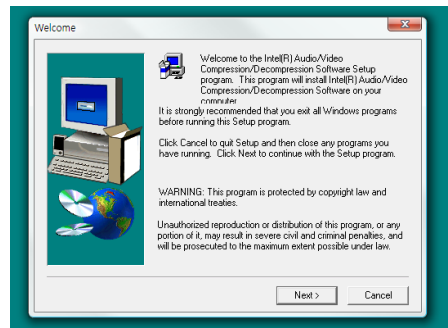
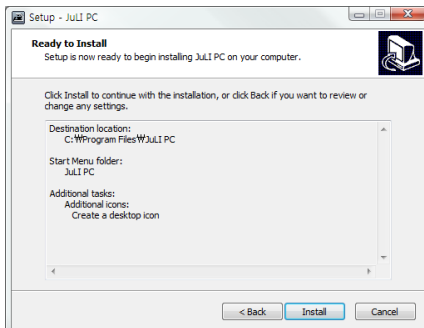
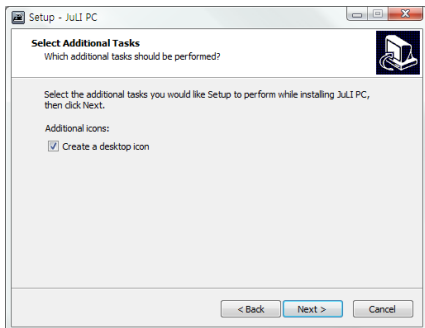
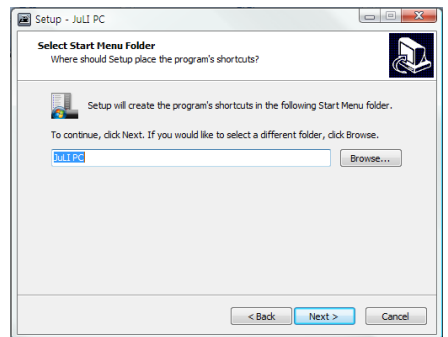
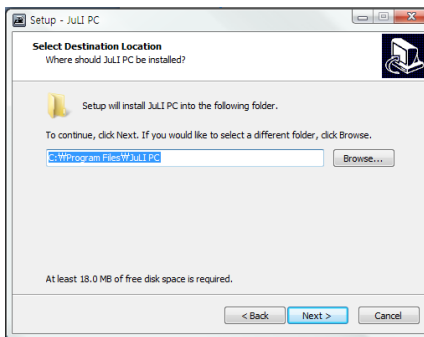
- View cells real-time under bright field or fluorescence or merged image
- Capture the live-cell images
- Store captured images
- Adjust image parameter (Exposure time and gain)
- Control the movie function
- Wi-Fi and 3G functions are available!

Operation, JuLI PC software

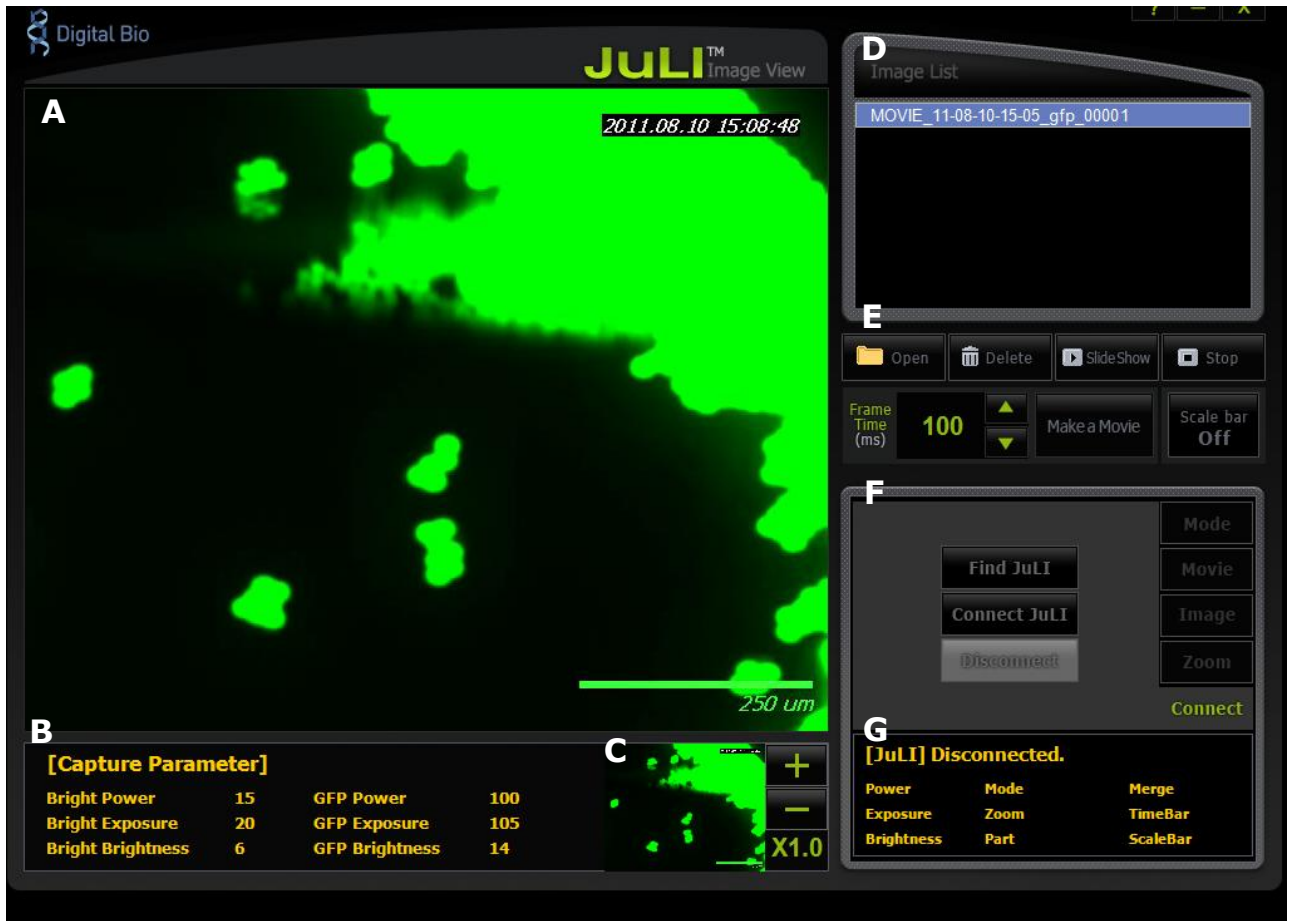
Install the JuLI PC Setup.exe (of the JuLI's SD card) to your personal computer as below.



JuLI PC Setup.exe
JuLI PC Setup
NanoEnTek, Inc.



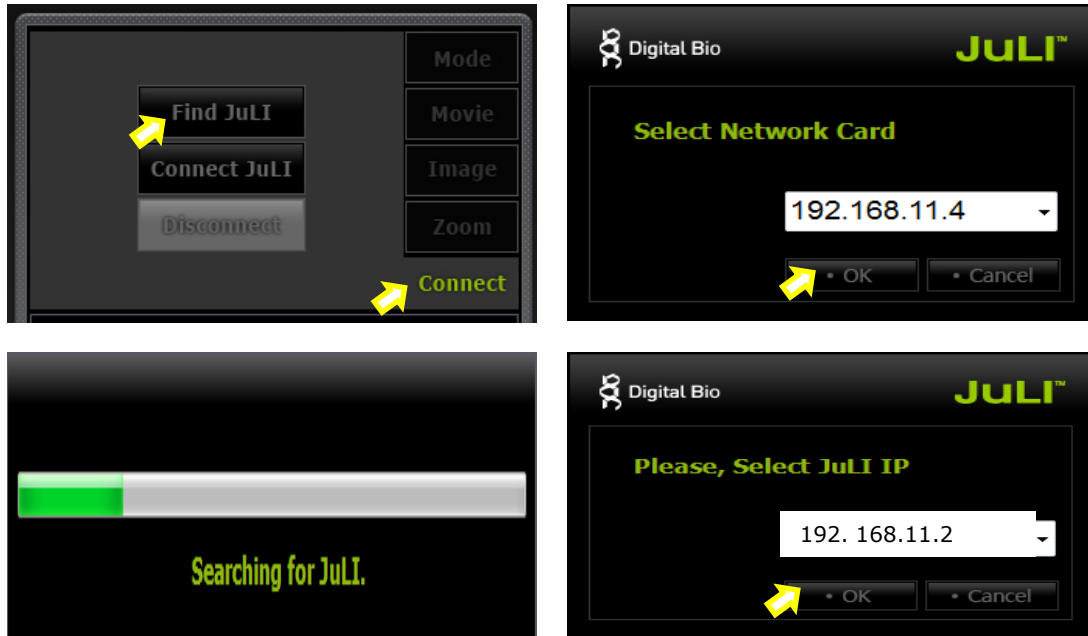
Operation, User Interface of the PC software



User interface of PC software

- A. Image screen
- B. Capture parameter display bar
- C. Navigation image
- D. Image lists from the JuLI
- E. Open and movie button
- F. Network connection button of JuLI
 - Connection
 - Mode selection
 - Movie setting
 - Image adjustment
 - Zoom in and out
- G. JuLI connection display bar

Operation, Network connection



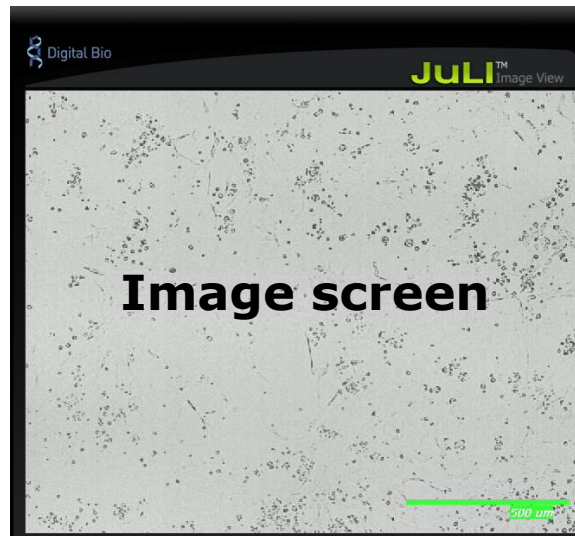
F. Network connection button of JuLI - Connection

1. Click the connect button
2. Click the find JuLI button and press 'OK'
3. Check the JuLI's IP (192.168.11.2) and if yes, click the OK button
4. You can check when connection is success as below.

Network is not Configured!! – Check whether the set information of the AP device is correct or not.



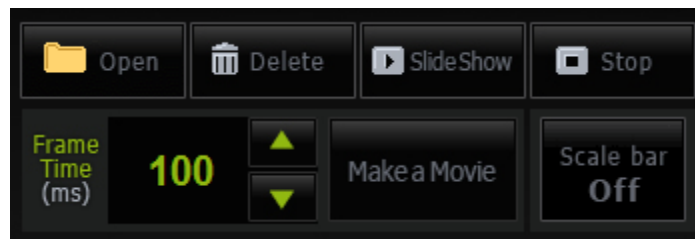
Operation, Image screen and open button



A. Image screen

JuLI PC software can zoom the image, quickly allowing you a close look.

1. Click the left button on the mouse to enlarge the image
2. Click the right button on the mouse to enlarge the image
3. Drag the mouse to move the enlarged image

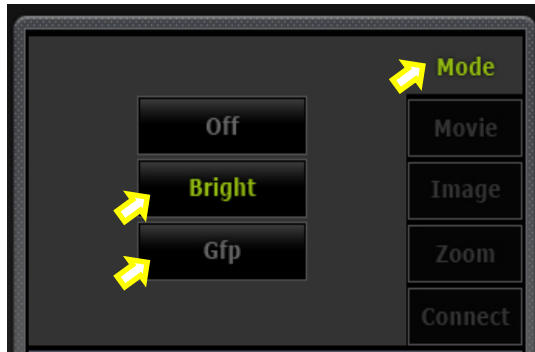


E. Open and movie button

1. Open the images from the PC or SD card
2. Click the slide show button to check the images
3. Adjust the frame time interval (ms)
4. Click the Make a Movie button to create a movie file

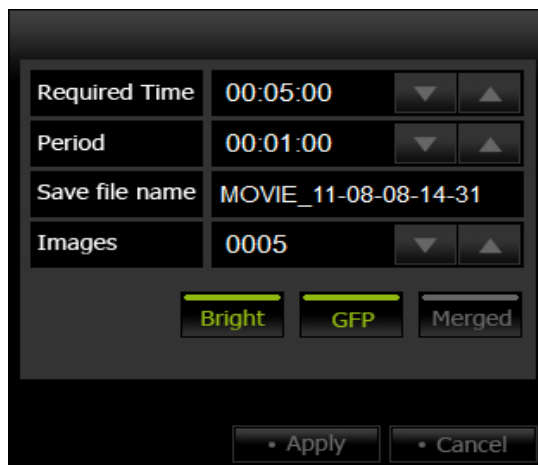
Operation, Control the JuLI via PC software

Mode selection



4. Click the mode button to select the bright or GFP

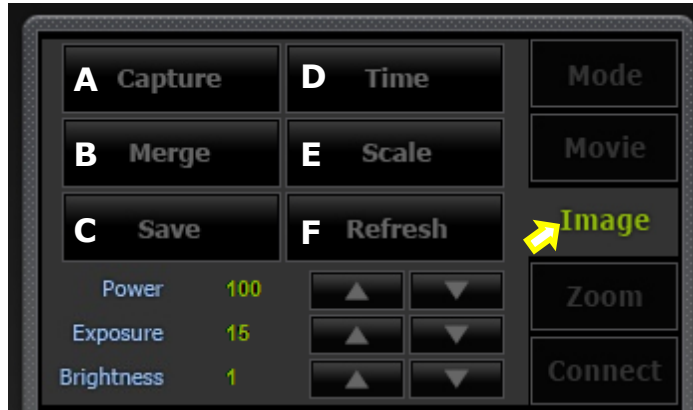
Movie setting



5. Click the movie button and Rec button to make a movie file
6. To create movie files, choose the time/period and image mode
7. Click the apply button to confirm the movie options

Operation, Control the JuLI via PC software

Image adjustment



- A. Capture button
- B. Merge button
- C. Save button
- D. Time button
- E. Scale bar button
- F. Refresh button

Zoom function

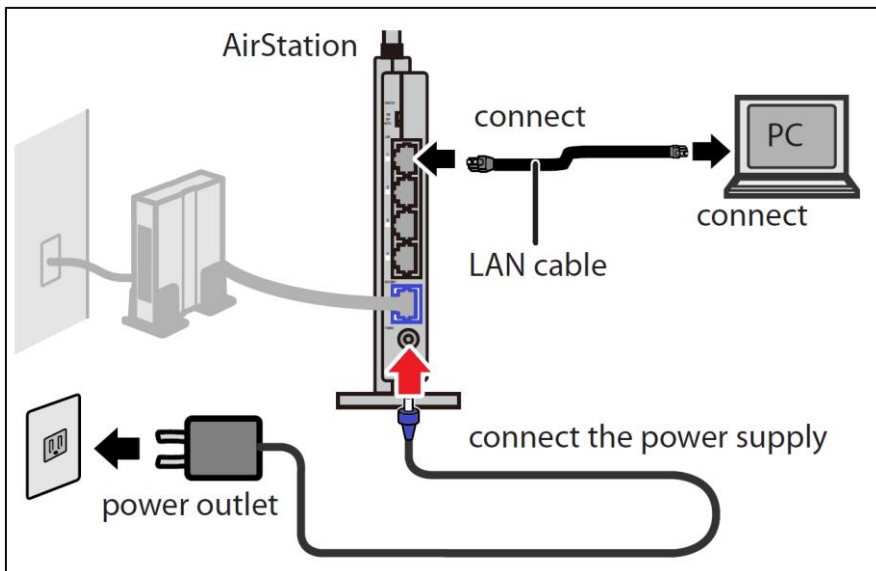


Operation, AP device setup

1. Connect the ethernet cable from your modem to the blue "INTERNET" (WAN) port on the AP(Access point) Device.



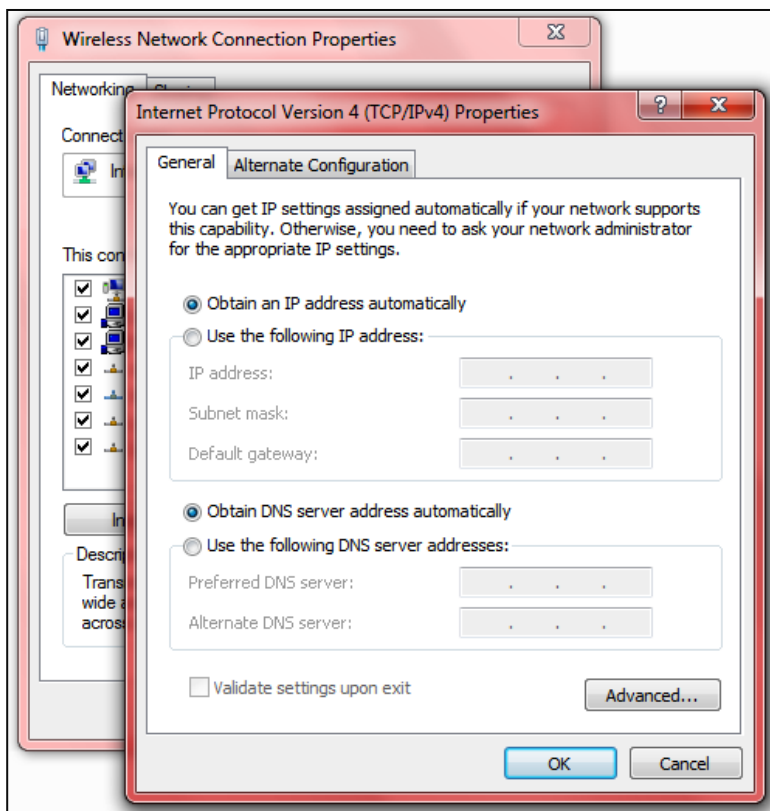
2. Connect the AP Device's LAN port to your computer with another LAN cable.
3. Turn on the AP Device, wait 60 seconds
4. Confirm that the devices are connected correctly as shown below.



IP를 자동 설정으로 변경해야함.

Operation, AP device setup


5. Go to your desktop, and right-click on something called Network Place or My Network Places (If you're using Windows Vista or 7, look for the Network and Sharing Center through Control Panel).
6. Click Properties.
7. Under the General tab, double-click on the Internet Protocol (TCP/IP)
8. A new window appears.
9. Select Obtain an IP address and DNS server address automatically as below.



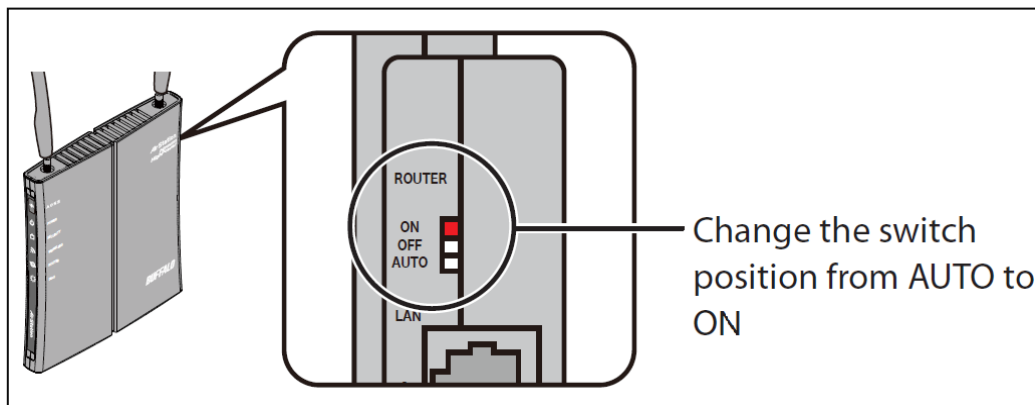
Operation, AP device setup

10. After the computer has booted, the LEDs on the AP Device should be in the following condition:

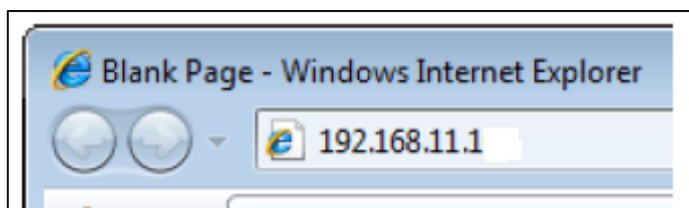
| | STATUS |
|----------------------|---|
| POWER | - Green light on |
| WIRELESS | - Green light on - Blinking |
| ROUTER | - Green light on - Off depending on your network |
| DIAG | - Off |
| | |
| LAN PORT | - Green light on - Blinking |
| INTERNET PORT | - Green light on - Blinking |



11. Change the Router switch position from "AUTO" to "ON"

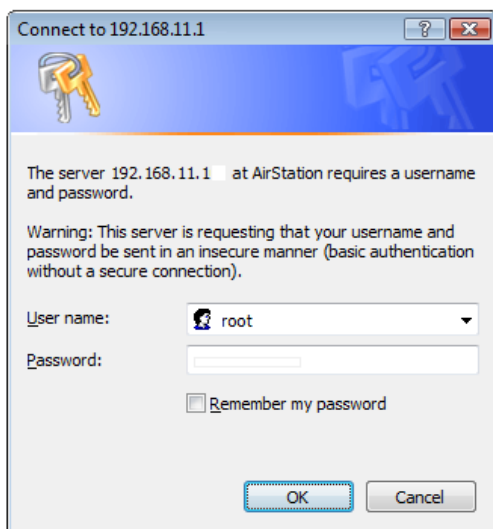


12. Launch a web browser. Enter the LAN IP address of the AP Device in the address field, then press the [Enter] key

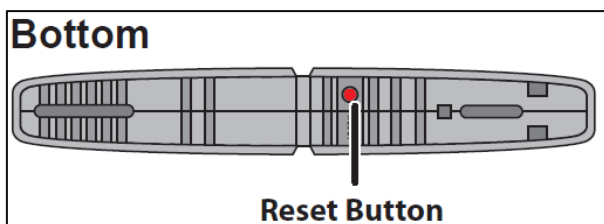


Operation, AP device setup

13. If the home page is displayed, setup is complete. If a user name and password screen is displayed, enter [root] (in lower case) for the user name, leave the password blank, and click [OK]. Follow the instructions on the screen to complete setup.



- By default, the password is blank (not set).
- If you forget your password, hold down the reset button to initialize all settings. The password will then be blank. Note that all other settings will also revert to their default values.
- Hold in this button until the DIAG LED comes on to initialize the Device settings. Power must be on for this to work.



Operation, AP device setup

14. Click [Internet / LAN] -> [internet]

15. Enter **your static IP address, subnet mask, default gateway, DNS primary, DNS secondary** into the home page of the AP device as below.

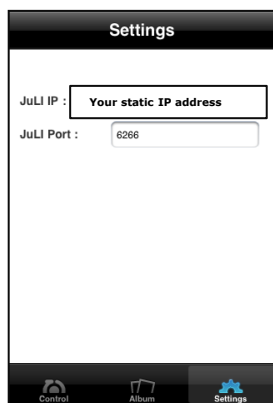
| | |
|--|---|
| Method of Acquiring IP Address | |
| <input type="radio"/> Perform Easy Setup (Internet Connection Wizard) | |
| <input type="radio"/> Acquire an IP Address Automatically from a DHCP Server | |
| <input type="radio"/> Use PPPoE Client | |
| <input type="radio"/> Use IP Unnumbered | |
| <input checked="" type="radio"/> Use this address | |
| Static IP Address | <input type="text" value="211.196.65.11"/> |
| Subnet Mask | <input type="text" value="255.255.255.0"/> |
| To set up PPPoE, click here . | |
| Advanced Settings | |
| Default Gateway | <input type="text" value="211.196.65.1"/> |
| Address of DNS Name Server | Primary: <input type="text" value="211.169.58.4"/> |
| | Secondary: <input type="text" value="211.169.58.5"/> |
| Internet MAC Address | <input checked="" type="radio"/> Use Default MAC Address(4C:E6:76:43:5B:A3) |
| | <input type="radio"/> Use this address <input type="text"/> |
| MTU Size of Internet Port | <input type="text" value="1500"/> Bytes |
| <input type="button" value="Apply"/> | |

Operation, JuLI scope from iPhone

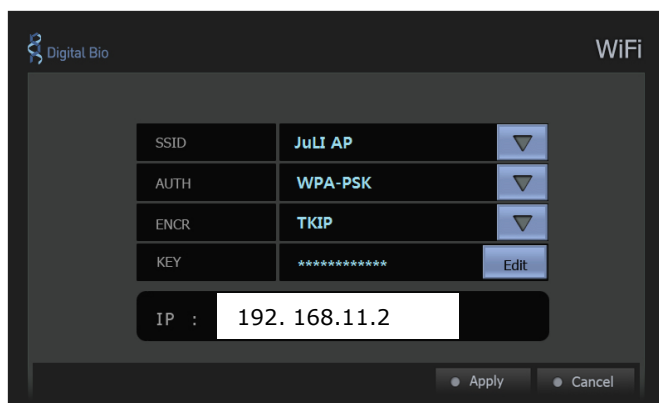
1. Download a JuLI application program (JuliScope) from the Apple store (iTunes).



2. Click the Setting button to check the JuLI IP address on the JuLI app.
3. Double check the IP address on the Wi-Fi menu of the JuLI main device.
To connect the Wi-Fi module, please enter the 192.168.11.2 for IP address to JuLI app.
To connect the 3G cable, please enter your static IP address to JuLI app.



JuLI app.



The Wi-Fi menu of the JuLI main device

4. When you finish the setting for Wi-Fi, click the control button on the JuLI app.
5. Click 'connect to JuLI' button and enjoy!

Hear are the latest features of JuLI's App.

- View cells real-time under bright field or fluorescence or merged image
- Capture the live-cell images
- Store captured images
- Adjust image parameter (Exposure time and gain)
- Control the movie function
- Wi-Fi and 3G functions are available!

Operation, JuLI PC software

Install the JuLI PC Setup in SD card of the JuLI as below



JuLI PC Setup.exe
JuLI PC Setup
NanoEnTek, Inc.

