

For research use only

ISO 9001/14001/13485 Certified Company

MBI Deep Blue Prestained Protein Evolution Ladder (1 color)

Cat. No. MDBPEL 250 μ l

Description

MBI Deep Blue Prestained Protein Evolution Ladder is a blue protein standard with 11 pre-stained proteins covering a wide range molecular weights from 10 to 180 kDa. Proteins are covalently coupled with a blue chromophore, and two reference bands (at 25 kDa and 72 kDa, respectively) are enhanced in intensity when separated on SDS-PAGE (Tris-glycine buffer). MBI Deep Blue Prestained Protein Evolution Ladder is designed for monitoring protein separation during SDS-polyacrylamide gel electrophoresis, verification of Western transfer efficiency on membranes (PVDF, nylon, or nitrocellulose) and for approximating the size of proteins. The ladder is supplied in gel loading buffer and is ready to use.

General Use

1. Mix thoroughly to ensure the homogeneous solution.
2. ~~???~~3 μ l or 4 μ l per loading for clear visualization during electrophoresis on 15-well or 10-well mini-gel, respectively.
3. Load samples.
4. Connect the power supply and start electrophoresis.

Contents

Approximately 0.1~0.5 mg/ml of each protein in the buffer (20mM Trisphosphate, pH 7.5 at 25°C), 2 % SDS, 0.2mM Dithiothreitol, 3.6 M Urea, and 15 % (v/v) Glycerol).

Storage

Stable for up to 3 months at 4°C. For long term storage, store at -20°C.



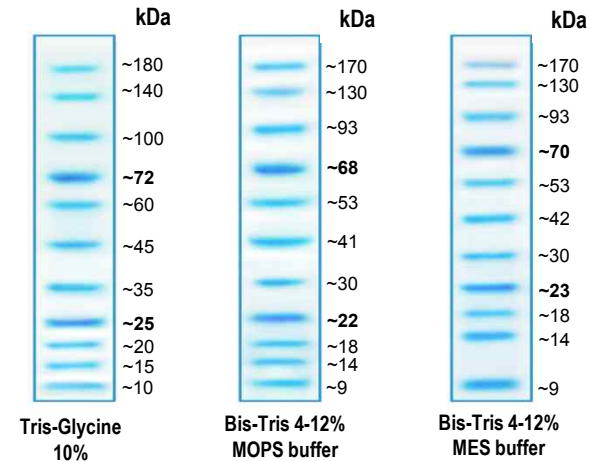
Montreal Biotech

Quality Control

Under suggested conditions, MBI Deep Blue Prestained Protein Evolution Ladder resolves 11 major bands in 10% SDS-PAGE (Tris-glycine buffer) and after Western blotting to nitrocellulose membrane.

Guide for Molecular Weight Estimation (kDa)

Migration patterns of , MBI Deep Blue Prestained Protein Evolution Ladder in different electrophoresis conditions are listed below.



Note : The apparent molecular weight (kDa) of each protein has been determined by calibration against an unstained protein ladder in each electrophoresis condition.

* supplement data should be considered for more accurate adjustment.

Caution : Not intended for human or animal diagnostic or therapeutic uses.

Toll free 1888-697-2312 Fax 1866-697-6414