

Hoods

SELECTION GUIDE

- Clean Benches
- Ductless Fume Hoods
- Bench Top Fume Hoods
- Arm Hoods
- PCR Workstations
- UV Sterilization Cabinets

Clean Benches

Description	Filter	Work Surface	Page	
Clean Benches (Advanced Models)	BC-01H	Grade 304 Stainless Steel	44	
	BC-11H			
	BC-21H			
Clean Benches (Basic Models)	BC-01B		HEPA filter	46
	BC-11B			
	BC-21B			

Fume Hoods

Description	Filter	Work Surface	Page
Ductless Fume Hoods	DLH-01G	6 Different Work Surface Types (optional)	48
	DLH-11G		
Bench Top Fume Hoods	PMH-720	Polyethylene	51
Arm Hoods	AH-75	Activated carbon Filter Prefilter	52

PCR workstations

Description	Filter	Work Surface	Page
PCR Workstations	PW-01	Transparent Acrylic Resin (10mm/0.39" thick)	53
	PW-11		
	PW-21		

UV Sterilization Cabinets

Description	Filter	Work Surface	Page
UV Sterilization Cabinets	UVC-01	Grade 304 Stainless Steel	54
	UVC-11		
	UVC-21		

Accessories & Options

Description	Page
for Clean Benches	47
for Ductless Fume Hoods	50
for PCR Workstations	55
for UV Sterilization Cabinets	55



GENERAL APPLICATIONS

Clean Benches

Asbestos Handling, Electronics Inspection/Repair, General Forensics, Non-toxic IV Solution Preparation, Plant Tissue Culture Maintenance, QA/QC Testing, Sterile Media Preparation, Syringe Filling, Tissue Fixation/Staining Preparation, etc.

Fume Hoods

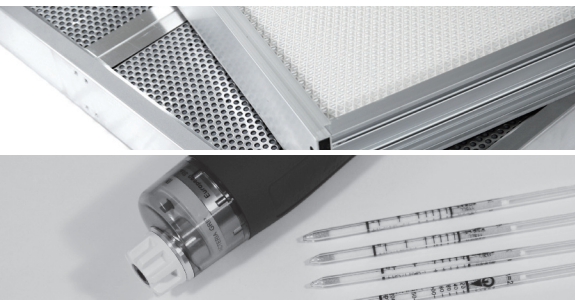
Chemical Sampling, Chemical Preparation, Cosmetic Production to Photochemical, Numerous Vapor-generating Laboratory Processes, Powder Extraction, Slide Preparation, Touch up Painting, Weighing Toxic Powders, Welding Fumes, etc.

PCR Workstations

Medical Device Assembly, PCR, Staining with Volatile, Sterile Media Preparation, Tissue Fixation/Staining Preparation etc.

UV Sterilization Cabinets

General Sterilization in daily use.



TECHNICAL BENEFITS

Clean Benches

- 1) UV-blocking tempered glass sliding door.
- 2) Automatic switch off of the UV lamp when the door is opened.
- 3) 99.99% efficient HEPA filter.
- 4) Separate fuses protecting against overcurrent.
- 5) Dirt-repellent powder coating on the external surface.
- 6) Grade 304 stainless steel work surface with high chemical resistance.
- 7) Using a BLDC motor in the blower provides a quiet (less than 65dB) and comfortable working environment.
- 8) Digital airflow rate sensor for automated airflow speed control. (BC-H model)
- 9) Each digital display is equipped inside and front. (BC-H model)
 - Ease to check the unit conditions during use.

Ductless Fume Hoods

- 1) Easy-to-operate control panel:
 - Consist of fluorescent lamp, Fan Start/Stop, Blower speed controller, alarm, menu and etc.
- 2) Built-in anemometer for visually monitoring real time input air velocity.
- 3) Transparent front door and bothsides made of acrylic resin providing clear inside view.
- 4) Door Stay: fixture to fix it when door open at 2 steps.
 - (if it's dropped without backing up, result in damage, and fixing magnetic enable to open hold it to 1 step-door.)
- 5) Protection against overcurrent.
- 6) Optional mobile stand with lockable casters for easy relocation.

PCR workstations & UV Sterilization Cabinets

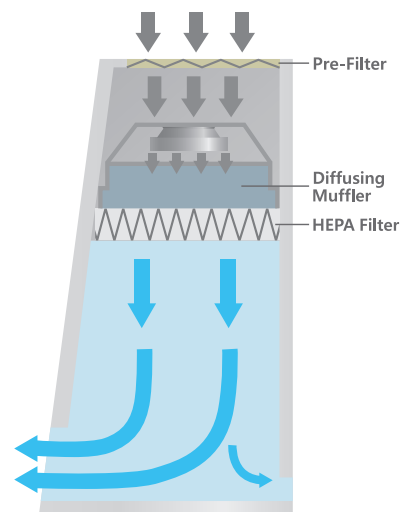
- 1) Powerful and uniformly distributed UV-C illumination.
 - (average lifespan: 8,000 hours)
- 2) Automatic switch off of the UV lamp when the door is opened unintentionally.
- 3) 99.99% efficient HEPA filter.
- 4) Protection against overcurrent.
- 5) Pre-filter extending the life of main HEPA filters. (PW models)
- 6) Intelligent digital controller for timer, alarm, and blower speed. (PW models)
- 7) Chemical-resistant work surface. (UVC-models)

Hoods

Clean Benches (Advanced Models)

Advanced vertical laminar flow clean benches with two digital displays are designed for high comfort and the best safe performance.

ISO Class 4 air cleanliness as per ISO 14644-1. (equivalent to Class 10 as per US Federal Standard 209E)
Nominal downflow velocity. (max. 0.45 m/sec)



BC-11H with an optional Stand

Included Accessories
see page 47

- HEPA Filter, Pre-Filter
- UV Lamp, Fluorescent Lamp
- Electrical Socket



Filtration Features

- ISO Class 4 (US Class 10) HEPA filter for optimal protection against cross-contamination.
- 0.3 μm and larger particulates are removed with 99.99% efficiency, leak-tight HEPA filter which satisfying class 10. (US Federal Standard 209E) (average life span of HEPA filter: 3 years – it depends on the test room conditions)
- Comfortable front access for inspection of HEPA filter and easy validation.
 - Standard gas injection hole for easy checking of HEPA filter leak performance test.
- High-quality polyester fiber pre-filter (with minimal pressure loss and 85% arrestance on the A.F.I. test) for trapping larger particles and increasing the life of the main HEPA filter.
- Digital differential pressure sensor allows for easy verification of HEPA filter condition great for knowing when to change HEPA filter.
- Digital airflow rate sensor (Microprocessor) for automated airflow speed control.
 - Offers continual airflow speed of same velocity and extends the HEPA filter life span.

Hoods

Clean Benches (Advanced Models)

► Safety & Constructional Features

- UV-blocking and impact-resistant tempered glass door.
- If the sash is opened during UV-lamp operation, UV lamp automatically turns OFF to protect users.
- If the sash is opened more than the recommended sash height level, during operation, warning alarm will activate and alarm users to lower the window to the recommended sash level to prevent contamination of samples.
- When UV light intensity is lower than 80%, UV warning lamp is automatically ON to let users know when to change UV-lamp.
- Quiet and comfortable working environment. (less than 65dB)
- Highly durable, rust-free, and easy-to-clean grade 304 stainless steel work surface.
- Smoothly sliding front door stoppable at any height for user's safety and easy transport of equipments into the workspace.
- Interlocking Smart Door System
 - Simply open the door while UV-lamp is ON. Interlocking smart door system will automatically turn OFF UV-lamp, turn ON Fluorescent lamp and Blower instead of your manual control.
- Two digital displays for the best convenience.
 - Even if any test is ongoing inside of the chamber, unit conditions such as velocity, temperature and humidity can be easily checked and controlled by inner display.
- Exclusive diffusing muffler structure forms high quality laminar flow.
- The inner left side magnetic board allows some memos and small tools.

► Specifications & Ordering Information

Model		BC-01H		BC-11H		BC-21H	
Air Flow Type		Vertical laminar flow					
Air Volume (Minimum / Maximum)		0 to 1020 cmh / 0 to 600 cfm		0 to 2040 cmh / 0 to 1200 cfm			
Laminar Airflow Velocity (m / s / fpm)		0.3 / 59		0.45 / 89		0.3 / 59	
Air Cleanliness within Work space		ISO 14644-1 Class 4, US Federal Standard 209E Class 10					
Filters	HEPA Filter	Typical efficiency of 99.99% on 0.3 μ m (US MIL-STD-282) ; Micro glass fiber Media, Particle board, AL separator, Neoprene gaskets					
	Pre Filter	Polyester fibers with an filter efficiency of 85% (A-F-TEST) ; Aluminum frame, Polyester fiber media					
Noise Level		Typically < 65dB at blower speed					
Materials	Main Body	Steel powder coating					
	Work Surface	Stainless steel grade 304, Hairline treatment					
	Windows (Front / Side)	Colorless and transparent UV absorbing 5mm tempered glass					
Illumination	Intensity (lux)	> 650					
	Fluorescent lamp (w)	30Wx2ea				32Wx2ea	
	UV lamp (w)	25Wx1ea		30Wx1ea		25Wx2ea	
Electric Socket Outlets		230V socket					
Dimension (WxDxH)	Internal (mm / inch)	944x550x670 / 37.2x21.7x26.4		1244x550x670 / 49.0x21.7x26.4		1844x550x670 / 72.6x21.7x26.4	
	External without Stand (mm / inch)	1135x615x1140 / 44.7x24.2x44.9		1435x615x1140 / 56.5x24.2x44.9		2035x615x1140 / 80.1x24.2x44.9	
	External with Stand (mm / inch)	1135x615x1832 / 44.7x24.2x72.1		1435x615x1832 / 56.5x24.2x72.1		2035x615x1832 / 80.1x24.2x72.1	
	Net Weight (Body) (kg / lbs)	140 / 308.6		185 / 407.9		225 / 496	
	Net Weight (Body+Stand) (kg / lbs)	170 / 374.8		215 / 474		255 / 562.2	
Electrical Requirements (230V, 1ph)		60Hz / 2.0 A 50Hz / 2.2 A		60Hz / 2.46 A 50Hz / 2.66 A		60Hz / 3.0 A 50Hz / 3.2 A	
Cat. No.		AAHA5011K AAHA5012K		AAHA5021K AAHA5022K		AAHA5031K AAHA5032K	
Electrical Requirements (120V, 1ph)		60Hz / 3.38 A		60Hz / 4.26 A		60Hz / 5.34 A	
Cat. No.		AAHA5013U		AAHA5023U		AAHA5033U	

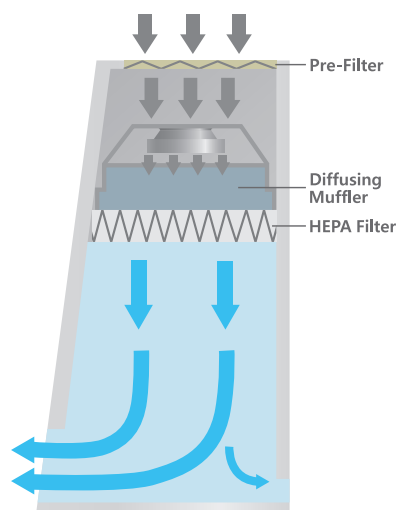
※ Above specifications can be changed without prior notice.

Hoods

Clean Benches (Basic Models)

Vertical laminar flow clean benches!

ISO Class 4 air cleanliness as per ISO 14644-1. (equivalent to Class 10 as per US Federal Standard 209E)
Nominal downflow velocity. (max. 0.45 m/sec)



BC-11B with an optional Stand

- Included Accessories**
- HEPA Filter, Pre-Filter
 - UV Lamp, Fluorescent Lamp
 - Electrical Socket
 - Differential Pressure Gauge
- 👉 see page 47



Filtration Features

- ISO Class 4 (US Class 10) HEPA filter for optimal protection against cross-contamination.
- 0.3 μm and larger particulates are removed with 99.99% efficiency, leak-tight HEPA filter which satisfying class 10. (US Federal Standard 209E) (average life span of HEPA filter: 3 years – it depends on the test room conditions)
- Comfortable front access for inspection of HEPA filter and easy validation.
 - Standard gas injection hole for easy checking of HEPA filter leak performance test.
- High-quality polyester fiber pre-filter (with minimal pressure loss and 85% arrestance on the A.F.I. test) for trapping larger particles and increasing the life of the main HEPA filter.
- Built-in differential pressure gauge for easy checking HEPA filter condition.
- Easy blower speed adjustment by the control panel.

Safety & Constructional Features

- UV-blocking and impact-resistant tempered glass door.
- If the sash is opened during UV-lamp operation, UV lamp automatically turns OFF to protect users.
- Lighting mode selection by 3-position toggle switch (UV/OFF/Fluorescent) preventing harmful UV exposure.
- Quiet and comfortable working environment. (less than 65dB)
- Highly durable, rust-free, and easy-to-clean grade 304 stainless steel work surface.
- Smoothly sliding front door stoppable at any height for user's safety and easy transport of equipments into the workspace.
- Exclusive diffusing muffler structure forms high quality laminar flow.
- The inner left side magnetic board allows some memos and small tools.

Hoods

Accessories & Options

Specifications & Ordering Information

Model		BC-01B		BC-11B		BC-21B	
Air Flow Type		Vertical laminar flow					
Air Volume (Minimum / Maximum)		0 to 1020 cmh / 0 to 600 cfm		0 to 2040 cmh / 0 to 1200 cfm			
Laminar Airflow Velocity (m / s / fpm)		0.3 / 59		0.45 / 89		0.3 / 59	
Air Cleanliness within Work space		ISO 14644-1 Class 4, US Federal Standard 209E Class 10					
Filters	HEPA Filter	Typical efficiency of 99.99% on 0.3µm (US MIL-STD-282) ; Micro glass fiber Media, Particle board, AL separator, Neoprene gaskets					
	Pre Filter	Polyester fibers with an filter efficiency of 85% (A-F-ITEST) ; Aluminum frame, Polyester fiber media					
Noise Level		Typically < 65dB at blower speed					
Materials	Main Body	Steel powder coating					
	Work Surface	Stainless steel grade 304, Hairline treatment					
	Windows (Front / Side)	Colorless and transparent UV absorbing 5mm tempered glass					
Illumination	Intensity (lux)	> 650					
	Fluorescent lamp (w)	30Wx2ea		30Wx1ea		32Wx2ea	
	UV lamp (w)	25Wx1ea		30Wx1ea		25Wx2ea	
Electric Socket Outlets		230V socket					
Dimension (WxDxH)	Internal (mm / inch)	944x550x670 / 37.2x21.7x26.4		1244x550x670 / 49.0x21.7x26.4		1844x550x670 / 72.6x21.7x26.4	
	External without Stand (mm / inch)	1135x615x1140 / 44.7x24.2x44.9		1435x615x1140 / 56.5x24.2x44.9		2035x615x1140 / 80.1x24.2x44.9	
	External with Stand (mm / inch)	1135x615x1832 / 44.7x24.2x72.1		1435x615x1832 / 56.5x24.2x72.1		2035x615x1832 / 80.1x24.2x72.1	
	Net Weight (Body) (kg / lbs)	140 / 308.6		185 / 407.9		225 / 496	
	Net Weight (Body+Stand) (kg / lbs)	170 / 374.8		215 / 474		255 / 562.2	
Electrical Requirements (230V, 1ph)		60Hz / 2.0 A 50Hz / 2.2 A		60Hz / 2.46 A 50Hz / 2.66 A		60Hz / 3.0 A 50Hz / 3.2 A	
Cat. No.		AAHA6011K AAHA6012K		AAHA6021K AAHA6022K		AAHA6031K AAHA6032K	
Electrical Requirements (120V, 1ph)		60Hz / 3.38 A		60Hz / 4.26 A		60Hz / 5.34 A	
Cat. No.		AAHA6013U		AAHA6023U		AAHA6033U	

※ Above specifications can be changed without prior notice.

for Clean Benches



HEPA Filter

- 99.99% efficient HEPA filter, industry standard size for economical replacement.



Stand with Casters

- Stand with Casters : Mobile stand made of powder-coated steel ideal for easy relocation.



Pre Filter

- Easy-to-replace pre-filter for trapping larger particles and extending the life of HEPA filters.

Filters

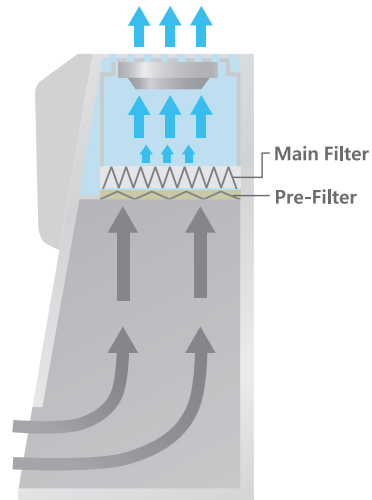
Cat. No.	Description	BC-01H/B	BC-11H/B	BC-21H/B
AAAB1601	HEPA Filter	•		
AAAB1602			•	
AAAB1603				•
AAAB1611	Pre-Filter	•		
AAAB1612			•	
AAAB1613				•

Others

Cat. No.	Description	BC-01H/B	BC-11H/B	BC-21H/B
AAAB1621	Stand with Casters	•		
AAAB1622			•	
AAAB1623				•
AAAB1631	UV Lamp(230V)	•		
AAAB1633			•	
AAAB1635				•
AAAB1632	UV Lamp(120V)	•		
AAAB1634			•	
AAAB1636				•
AAAB1561	Gas cock	•	•	•
AAAB1571	Differential Pressure Gauge (only for BC-B)	•	•	•

Hoods

Ductless Fume Hoods



DLH-01G

Included Accessories

- Fluorescent Lamp

Optional Accessories see page 50

- Stand with Caster
- Chemical Filters, Work Surfaces
- Gas Detector, Gas Detecting tubes



⋮ Digital Controller



⋮ Anemometer



⋮ Utility Hole



⋮ Front Cover

Hoods

Ductless Fume Hoods

Safe and energy-saving mobile workspace free from toxic vapors and fumes without the need of costly ductwork.

Meeting or exceeding various international safety standards.

► Features

- Easy monitoring of the internal airflow speed thanks to the built-in anemometer.
- Convenient change of filter cartridges by opening the upper front cover.
- Fully or half openable front door for convenient transport of experimental apparatuses and equipments into or out of the workspace.
- Large-capacity blower maintaining sufficient intake flow rate and reducing noise.
(less than 55 dB under normal operation)
- Fluorescent light installed outside the workspace in order to prevent the airflow hindrance as well as the contamination while maintaining illumination intensity.
- Built-in utility hole for easily routing the cords or wires of the equipments placed inside the hood.
- A variety of filters and work surfaces available to suit your specific experimental needs. (refer to accessory section)

► Safety Standards Compliance

- Efficiency and capacity of activated carbon filters : BS 7989:2001
- Structure, electrical outlet, lighting, and sound level : BS 7258-1:1994
- Local smoke, large volume visualization, face velocity, and tracer gas : ANSI/ASHRAE 110-1995 and NF EN 14175-1

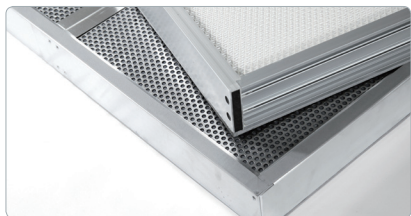
► Specifications & Ordering Information



Model		DLH-01G	DLH-11G
Fume Hood Type		Ductless	
Permissible Environmental Condition		Temperature 5°C to 40°C Maximum relative humidity 80% Maximum altitude : Altitude up to 2,000m	
Controller		Microprocessor control	
Face Velocity		Initial set point: 0.4m/s, 80fpm	
Air Flow Meter		Swing vane type	
Main Filter		Chemical Filter (optional 6 different filters)	
Pre Filter		Washable high efficiency nylon filter	
Materials	Main Body	2.0mm steel (epoxy powder-coated)	
	Work Surface	Optional 6 different work surfaces	
	Window (Front / Side)	8mm / 6mm thick acrylic resin	
Fluorescent Light Intensity		> 600lux	
Noise Level		55dB under normal operation	
Dimension (WxDxH)	Internal (mm / inch)	880×640×800 / 34.6×25.2×31.5	1180×640×800 / 46.5×25.2×31.5
	External without Stand (mm / inch)	900×660×1250 / 35.4×26×49.2	1200×660×1250 / 47.2×26×49.2
	External with Stand (mm / inch)	900×660×1985 / 35.4×26×78.1	1200×660×1985 / 47.2×26×78.1
	Net Weight (Body) (kg / lbs)	100 / 220.5	118 / 260.1
	Net Weight (Body+Stand) (kg / lbs)	120 / 264.6	140 / 308.6
Electrical Requirements (230V, 60Hz)		0.7A	
Cat. No.		AAHB2001K	AAHB2011K
Electrical Requirements (230V, 50Hz)		0.6A	
Cat. No.		AAHB2002K	AAHB2012K
Electrical Requirements (120V, 60Hz)		1.3A	
Cat. No.		AAHB2003U	AAHB2013U
Electrical Requirements (100V, 50Hz)		1.5A	
Cat. No.		AAHB2004U	AAHB2014U

※ Above specifications can be changed without prior notice.

for Ductless Fume Hoods



Filters



Work Surface



Gas Detector and Tubes

Filters

Cat. No.	Description	Application	DLH-01G	DLH-11G	
EDA9191	Activated Carbon Filter	All common laboratory chemicals, especially VOC, Organic, Benzene, Toluene, etc	•		
EDA9192				•	
EDA9199	Acid Filter	An acidic solvent; Acetic acid, etc	•		
EDA9200				•	
EDA9201	Halogen Compounds Filter	Halogen compounds like Chlorine, Fluorine, Iodine, Bromine, Astatine, etc	•		
EDA9202				•	
EDA9203	Formaldehyde Filter	Formaldehyde applications	•		
EDA9204					•
EDA9205	Ammonia / Amines Filter	Ammonia / Amines by chemisorptions	•		
EDA9206					•
EDA9193				•	
EDA9194	HEPA Filter	Biohazardous aerosols and other visible and non-visible particles (filtration efficiency: 99.99% at 0.3 microns)		•	
EDA9196	Pre filter	-	•		
EDA9198					•

Work Surfaces & Stands

Cat. No.	Description	DLH-01G	DLH-11G
AAAB2501	Work Surface (SUS #304)	•	
AAAB2502			•
AAAB2503	Work Surface (SUS #316)	•	
AAAB2504			•
AAAB2505	Work Surface (Ceramide)	•	
AAAB2506			•
AAAB2507	Work Surface (Polypropylene)	•	
AAAB2508			•
AAAB2509	Work Surface (Bakelite)	•	
AAAB2510			•
AAAB2511	Work Surface (PVC)	•	
AAAB2512			•
AAAB2521	Stand with Casters	•	
AAAB2522			•

Gas Detector & Gas Detecting Tubes

Cat. No.	Description	DLH-01G	DLH-11G
AAAB2531	Gas Detector (KITAGAWA AP-20)	•	•
EAA1550	Gas Detecting Tube (Benzene, GASTEC-121SP (0.5-10ppm))	•	•
EAA1551	Gas Detecting tube (Toluene, GASTEC-122L (1-100ppm))	•	•
EAA1552	Gas Detecting tube (Acetic acid, GASTEC-81L (0.125-25ppm))	•	•
EAA1553	Gas Detecting tube (Chloroform, GASTEC-137 (4-400ppm))	•	•
EAA1554	Gas Detecting tube (Formaldehyde, GASTEC-91LL (0.05-1ppm))	•	•
EAA1555	Gas Detecting tube (Ammonia, GASTEC-3L (0.5-60ppm))	•	•

Hoods

Bench Top Fume hoods

Ideal for use in limited laboratory spaces.

Cost-effective, fully portable alternative to metal hoods.

Features

- Compact design for easy moving and space saving.
- Transparent polycarbonate front door for observation.
- The door opens to five positions for comfort and convenience.
- One-piece molded design for leak-tight and exceptional durability.
- Chemical resistance and spark-less polyethylene.
- An exhaust motor is required. The unit can be connected to an in-house laboratory exhaust system. Either 150mm (6") dia flexible duct can be used.
- Rounded inner corners for continuous air flow and easy cleaning.



PMH-720



⋮ Stopper



⋮ O.D. 150mm Duct Hole
(flexible duct is not included)

Specifications & Ordering Information

Model		PMH-720
Permissible air velocity (m/s, fpm)		0.3 to 1 / 59.1 to 196.9
Permissible Environmental Condition		Temperature 2°C to 60°C Maximum relative humidity 80% Maximum altitude up to 2,000m
Material	Main Body	Polyethylene
	Window	Polycarbonate
Dimension	External (WxDxH, mm/inch)	720x450x560 / 28.3x17.7x22
	Entrance (WxD, mm/inch)	560x300 / 22x11.8
	Duct Hole (O.D., mm/inch)	150 / 6
	Net Weight (kg / lbs)	7 / 15.4
Cat. No.		AAAB5011

※ Above specifications can be changed without prior notice.

The best solutions for eliminating dust and fume hazards at source when mobility is needed.



AH-75

Features

- Chemical-resistant and heavy duty polypropylene extraction Arm.
- 360-degree rotatable joints in the arms provide exceptional flexibility for easy positioning.
- Arm joints are easily removable for simple adjustment of length of the arm. (Adjustment parts : B, C)
- Air flow rate is adjustable by the damper of the extraction arm.
- Durable BLDC motor and included high-quality polyester fiber pre-filter.
- Convenient air flow control.
- Gas detecting port for checking filter condition.
- Automatic fan malfunction warning alarm.
- Activated carbon Filter and prefilter are provided as standard accessories.

Standard Accessories

Cat. No.	Description
AAAB6502	GF Activated carbon Filter
AAAB6507	Prefilter

* for Gas Detector & Tubes ordering information, please refer to page 50.

Specifications & Ordering Information

Cat. No.	Ø (mm,inch)	Dimensions					Description for parts		
		Length (mm/inch)							
		A	B	C	D	Total			
Electrical Requirements		2 Joints							
230V/60Hz, 1.5A	230V/50Hz, 1.5A	120V/60Hz, 3A	75/2.9	250/9.8	-	530/20.9		260/10.2	1040/40.9
AAHB6011K	AAHB6012K	AAAB6013U							
230V/60Hz, 1.5A	230V/50Hz, 1.5A	120V/60Hz, 3A	75/2.9	250/9.8	-	330/12.9		260/10.2	840/33.1
AAHB6021K	AAHB6022K	AAHB6023U							
Electrical Requirements		3 Joints							
230V/60Hz, 1.5A	230V/50Hz, 1.5A	120V/60Hz, 3A	75/2.9	250/9.8	540/21.3	530/20.9	260/10.2	1580/62.2	
AAHB6101K	AAHB6102K	AAHB6103U							
230V/60Hz, 1.5A	230V/50Hz, 1.5A	120V/60Hz, 3A	75/2.9	250/9.8	440/17.3	530/20.9	260/10.2	1480/58.3	
AAHB6071K	AAHB6072K	AAHB6073U							
230V/60Hz, 1.5A	230V/50Hz, 1.5A	120V/60Hz, 3A	75/2.9	250/9.8	440/17.3	430/16.9	260/10.2	1380/54.3	
AAHB6051K	AAHB6052K	AAHB6053U							
230V/60Hz, 1.5A	230V/50Hz, 1.5A	120V/60Hz, 3A	75/2.9	250/9.8	440/17.3	330/12.9	260/10.2	1280/50.4	
AAHB6041K	AAHB6042K	AAHB6043U							

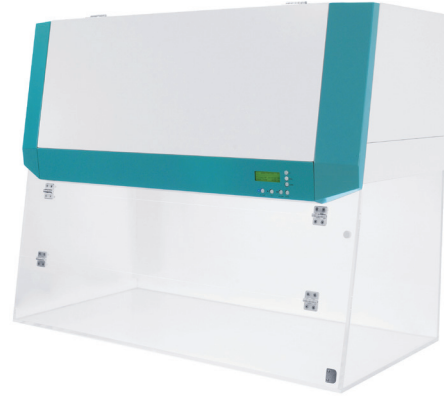
Hoods

PCR Workstations

Specially designed to minimize the sample contamination during PCR applications by combining ISO Class 4 (US Class 10) clean air environment.

Filtration Features

- ISO Class 4 (US Class 10) HEPA filter for optimal protection against cross-contamination. (average life span of HEPA filter: 3 years – it depends on the test room conditions)
- High-quality polyester fiber pre-filter (with minimal pressure loss and 85% arrestance on the A.F.I. test) for trapping larger particles and increasing the life of the main HEPA filter.
- Convenient change of filter cartridges by opening the upper front cover.
- Large capacity blower and easy blower speed adjustment by the control panel.



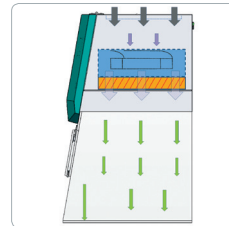
Safety & Constructional Features

- Interlocking safety door system shuts off UV light automatically when opening the door.
- UV-blocking door and side panels made of transparent acrylic resin provides clear inside view.
- UV over-exposure alarm and over-current protection.
- Effective sterilization using a long-life 254 nm UV lamp. (average life span of UV lamp: 8,000 hours)
- Built in anti-glare fluorescent lamp minimizes shadows and relieves eye strain.
- Programmable digital UV light timer with Delayed OFF function.
- User-friendly microprocessor-based control panel.

PW-11

Included Accessories
 see page 55

- HEPA Filter
- Pre Filter
- UV Lamp
- Fluorescent Lamp



Specifications & Ordering Information



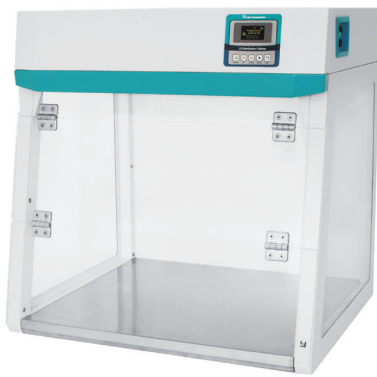
Model		PW-01		PW-11		PW-21		
Air Flow Type		Vertical						
Max. Air Volume (cmh / cfm)		557 / 327		697 / 408		929 / 546		
Min. Air Volume (cmh / cfm)		167 / 97		209 / 121		279 / 162		
Laminar Airflow Velocity (m / s / fpm)		0.3 / 60						
Filter	Air Cleanliness	ISO 14644-1 Class 4						
	HEPA Filter	Typical efficiency of 99.99% at 0.3 μm US MIL-STD-282 ; Micro glass fiber Media, Particle board, Aluminum separator, Neoprene gaskets						
	Pre Filter	Polyester fibers with an efficiency of 85% (A.F.I TEST); AL frame, Polyester fiber media						
Noise level (dBA)		Typically < 60 dBA at blower speed						
Material	Work Surface	10mm thick acrylic resin (clear type)						
	Window (Front, Side / Back)	8mm / 10mm thick acrylic resin (clear type)						
Illumination	Intensity	Fluorescent Lamp (lux)	>1000					
		UV Density (μW / cm ²)	165	185	330			
	Capacity	Fluorescent Lamp	15W×1EA	20W×1EA	30W×1EA			
		UV Lamp	15W×1EA	20W×1EA	30W×1EA			
Dimension (W×D×H)	Interior (mm / inch)	700×585×602 / 27.5×23×23.7		880×585×602 / 34.6×23×23.7		1180×585×602 / 46.5×23×23.7		
	Exterior (mm / inch)	720×605×964 / 28×24×38		900×605×964 / 35.4×24×38		1200×605×964 / 47.2×24×38		
	Net Weight (Body) (kg / lbs)	56.2 / 123.9		64.2 / 141.5		77.8 / 171.5		
Electrical Requirements (230V)		60Hz, 1.3A	50Hz, 1.3A	60Hz, 1.4A	50Hz, 1.4A	60Hz, 1.5A	50Hz, 1.5A	
Cat. No.		AAHB3001K	AAHB3002K	AAHB3011K	AAHB3012K	AAHB3021K	AAHB3022K	
Electrical Requirements (120V)		60Hz, 2.2A		60Hz, 2.7A		60Hz, 2.9A		
Cat. No.		AAHB3003U		AAHB3013U		AAHB3023U		

※ Above specifications can be changed without prior notice.

Hoods

UV Sterilization cabinets

Ideal for effective decontamination of apparatus and equipments before carrying out sensitive PCR experiments using a high-quality UV lamp with timer control.



UVC-11

Included Accessories
 see page 55

- UV Lamp
- Fluorescent Lamp



Safety Features

- Interlocking safety door system shuts off UV light automatically when opening the door.
- UV-blocking door and side panels made of transparent acrylic resin provides clear inside view.
- UV over-exposure alarm and over-current protection.

Constructional Features

- Effective sterilization using a long-life 254 nm UV lamp. (average life span of UV lamp: 8,000 hours)
- Built in anti-glare fluorescent lamp minimizes shadows and relieves eye strain.
- Programmable digital UV light timer with Delayed OFF function.
- User-friendly microprocessor-based control panel.
- Easy-to-clean grade 304 stainless steel work surface with high chemical resistance against various organic solvents.

Specifications & Ordering Information



Model		UVC-01		UVC-11		UVC-21	
Illumination	Intensity	Fluorescent Lamp (Lux)	>800	>900	>1000		
		UV Density ($\mu\text{W} / \text{cm}^2$)	150	385	450		
	Capacity	Fluorescent Lamp	8W×1ea	15W×1ea	20W×1ea		
		UV Lamp	8W×1ea	15W×1ea	20W×1ea		
Material	Work Surface	Stainless steel grade 304					
	Window (Front, Back / Side)	5 mm thick acrylic resin					
Dimension (W×D×H)	Interior (mm / inch)	433×500×468 / 17.0×19.7×18.4		583×500×468 / 23×19.7×18.4		880×500×468 / 34.6×19.7×18.4	
	Exterior (mm / inch)	450×509×610 / 17.7×20×24		600×509×610 / 23.6×20×24		900×509×610 / 35.4×20×24	
	Net Weight (Body) (kg / lbs)	15 / 33.1		175 / 38.6		20 / 44.1	
Electrical Requirements (230V)		60Hz, 0.1A	50Hz, 0.1A	60Hz, 0.2A	50Hz, 0.2A	60Hz, 0.3A	50Hz, 0.3A
Cat. No.		AAHB4001K	AAHB4002K	AAHB4011K	AAHB4012K	AAHB4021K	AAHB4022K
Electrical Requirements (120V)		60Hz, 0.2A		60Hz, 0.4A		60Hz, 0.6A	
Cat. No.		AAHB4003U		AAHB4013U		AAHB4023U	

※ Above specifications can be changed without prior notice.

Hoods

Accessories & Options

for PCR Workstations & UV Sterilization Cabinets

General UV Dose and Time Required

Pathogen	Average UV Dose Required ($\mu\text{W} \cdot \text{s}/\text{cm}^2$)	Average UV Time Required ($\mu\text{W}/\text{cm}^2/\text{sec.}$)					
		PW-01	UVC-01	PW-11	UVC-11	PW-21	UVC-21
		165	150	185	385	330	450
<i>S. enteritidis</i>	4,000	25	27	22	10	13	9
<i>B. megatherium sp. (spores)</i>	2,730	17	18	15	7	9	6
<i>B. subtilis</i>	7,100	43	47	39	18	22	16
<i>Eberthella typhosa</i>	2,140	13	14	12	6	7	5
<i>Escherichia coli (E. coli)</i>	3,000	19	20	17	8	10	7
<i>Micrococcus candidus</i>	6,050	37	40	33	16	19	13
<i>Proteus vulgaris</i>	2,640	16	18	15	7	8	6
<i>Pseudomonas aeruginosa</i>	5,500	34	37	30	14	17	12
<i>Pseudomonas aeruginosa</i>	3,500	22	23	19	9	11	8
<i>S. typhimurium</i>	8,000	49	53	44	21	25	18
<i>Shigella paradysenteriae</i>	1,680	101	11	10	4	6	4
<i>Spirillum rubrum</i>	4,400	27	29	24	11	14	10
<i>Staphylococcus albus</i>	1,840	12	12	10	5	6	4

* Permissible environmental conditions: temperature (20 to 25°C) and relative humidity (up to 60%).

* Above listed applications are for general purpose use.



HEPA Filter (only for PW models)



Fluorescent Lamp



UV Lamp

for PCR Workstations

Cat. No.	Description	PW-01	PW-11	PW-21
EDA9219	HEPA Filter	•		
EDA9220			•	
EDA9221				•
CHE4436	Fluorescent Lamp	•		
CHE4410			•	
CHE4409				•
CHE4431	UV Lamp	•		
CHE4427			•	
CHE4423				•

for UV Sterilization Cabinets

Cat. No.	Description	UVC-01	UVC-11	UVC-21
CHE4435	Fluorescent Lamp	•		
CHE4436			•	
CHE4410				•
CHE4434	UV Lamp	•		
CHE4431			•	
CHE4427				•