

NEST®



-18~-20°C

can be repeatedly frozen
and thawed three times



Adopts a dispensing technique to glue different layers

For industrial-scale production of animal vaccines

Freeze resistance★★★★★

BioFactory(-20°C Frost Resistance)

The NEST freeze-resistant BioFactory adopts a dispensing technique to glue different layers, thus its freeze resistance is upgraded. It can withstand freezing at -18 ~ -20 °C, and can be repeatedly frozen and thawed three times, with better firmness.

Reminder: Due to the principle of thermal expansion and cold contraction, after the BioFactory uses a sealed cap to fill the culture media and freezes, the bottom or top layer may be slightly deformed. This is an inevitable and normal phenomenon, and there will be no leakage and will not affect normal use.

+86-510-6800 6788

info@nest-wuxi.com

www.cell-nest.com

● Tightness test

During the production process, the product will go through a full inspection of the air-tightness test to ensure that each BioFactory has a good airtight performance

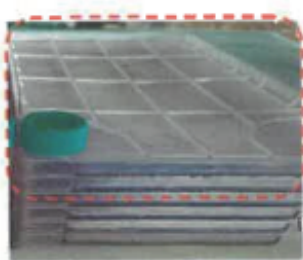
● Pressure test

After the product is irradiated with E-beams. The product is pressurized at 8kPa, and the pressure is held for 90s. This process is repeated twice, with an interval of more than 4h in between. The product is qualified if there is no air leakage.



● Freeze-resistance performance test

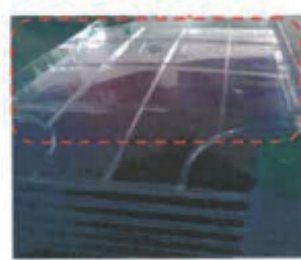
1. Take 3 NEST 10-layer freeze-resistant BioFactories, add 200mL of crystal violet solution to each layer after irradiation, and tighten the sealing cap.
2. Refrigerate the BioFactories at -18 to -20 degrees Celsius for 48 hours, then remove them.
3. After they have completely melted, lay them flat for 12 hours. Then, lay them on each side (each of the four sides) for 2 hours each and observe for any liquid leakage.



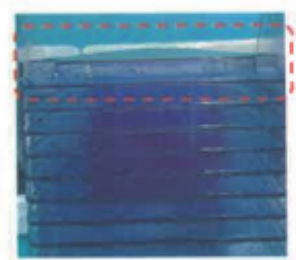
Top layer of the product is depressed



Bottom of the product is depressed

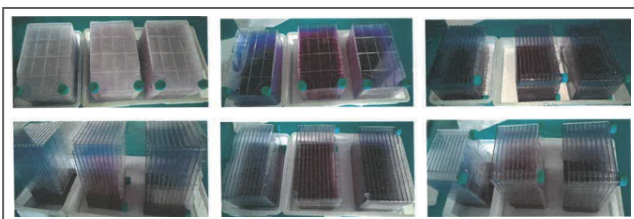


Top layer of the product is raised



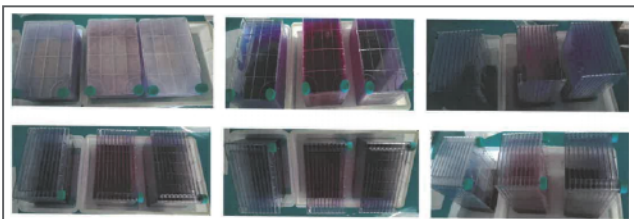
Bottom of the product is raised

NEST 10-layer BioFactory(Resistant to freeze) has strong freeze-resistant performance. After three cycles of freezing and thawing at -18 to -20 degrees Celsius, the bottom or top layer of the product may have slight deformation, but there is no leakage.



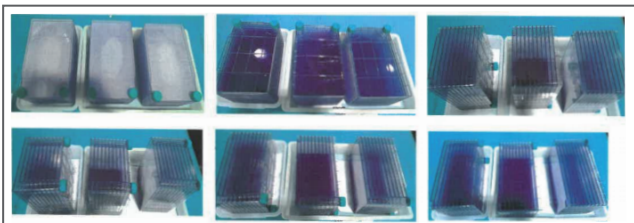
First freeze-thaw test

12 hours for flat laying, 2 hours for side laying (4 side laying respectively)



Second freeze-thaw test

12 hours for flat laying, 2 hours for side laying (4 side laying respectively)



The third freeze-thaw test

12 hours for flat laying, 2 hours for side laying (4 side laying respectively)

● Product Information

Layers	Cultivation area (cm ²)	Size parameters (mm)			Specification	Package	Product number
		Length	Width	Height			
10	6320	335	205	201	Double Large mouth, T C , sterile	Double bag package, 1 pc/bag, 6 pcs/case	771392