



Fast | Modular | Smart



Made for extraordinary life

4-Channel Pipette Head

April 2026

All information within this presentation is subject to change.

© 2026 Bio Molecular Systems Pty. Ltd. – All rights reserved

Features

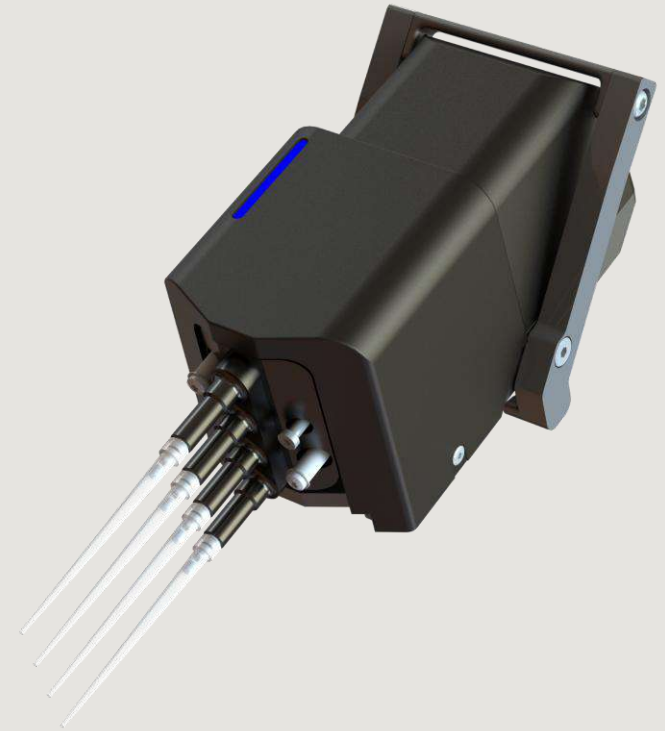
Run times for protocols are reduced by more than half (e.g., CleanNGS Cleanup reduces from 120 min to 50 min).

Can be used with 1, 2, 3 or 4 tips per aspirate and dispense. Every second tip is taken.

When using less than 4 tips at a time, the 4-channel head will take tips from the bottom right-hand side of the tip rack (end).

Liquid level sensing behaves the same as per the single channel head.

LED indicator displays aspirate, dispense and any error.



Specifications

Performance like the single channel head.

Volume (μL)	Accuracy (%)	Precision (% CV)
1	5	10
5	2.5	1
50	1	0.5

Supports all mixing modes, including vortex.

Works with foil piercing.



Tip Compatibility

Only compatible with the 50 μ L black rack pipette tips.

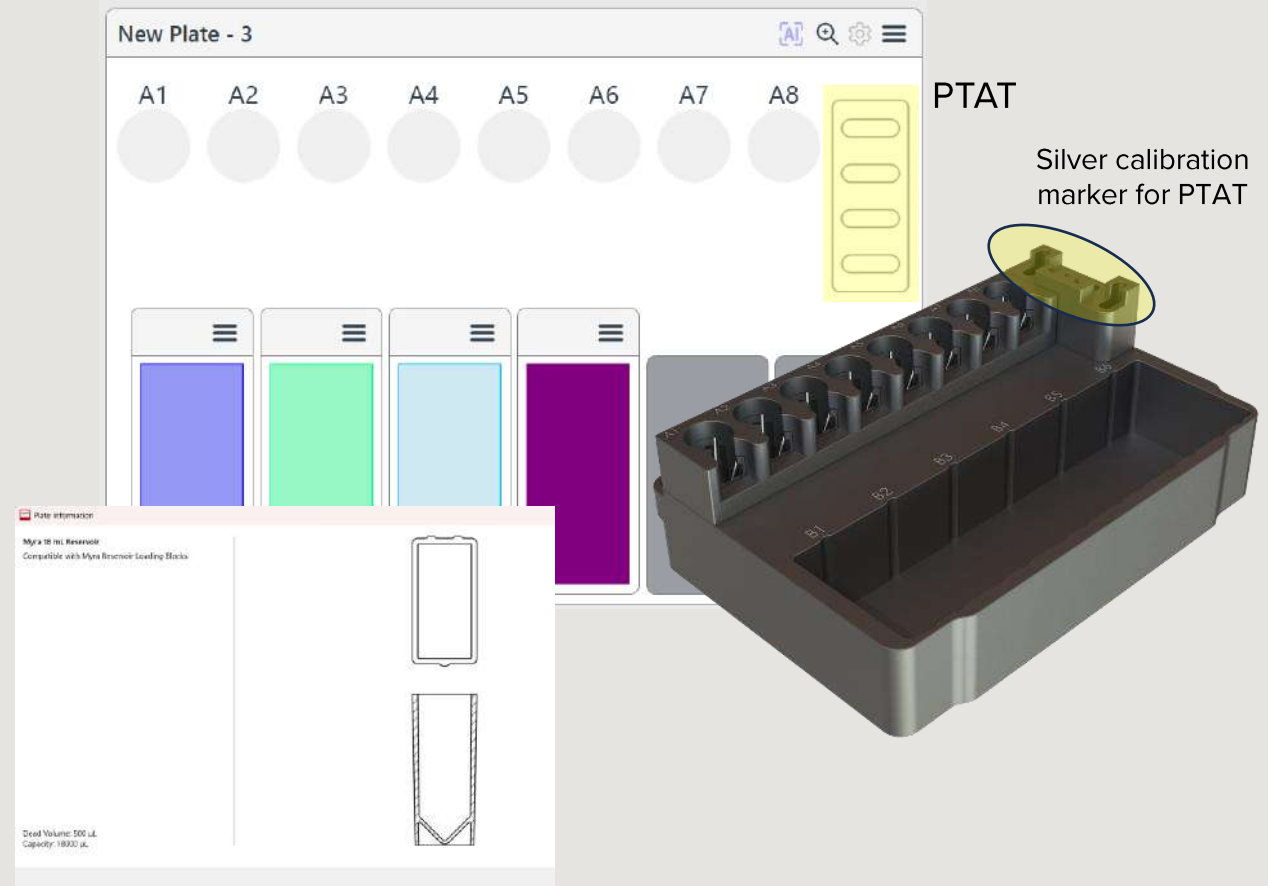
- These are the same price as blue racked tips
- Not compatible with the 20 μ L tips
- Black rack tips are NOT compatible with RED 50 μ L single-channel pipette heads. They can only be used with blue rack tips
- Customers can swap over to the black heads during a pipette calibration at no additional cost



Reservoir Block with PTAT

Must be used with a reservoir block (MYRA-LBRESERVOIR-6).

- Includes Precision Tip Alignment Tool, which ensures optimal tip loading of all four tips
 - Designed to eliminate any variability from flex in tip racks
 - Allows for higher precision with small volumes
 - Unique to Myra
- This is a modular block that allows for multiple different reservoir types along with 8x 1.5 or 2.0 mL screw or flip cap tubes – w/ special springs
- Flip caps will no longer have any bounce that could impact tube height, reducing dead volume



Waste Tubs

It must be used with a 4-channel waste tub lid.



● MYRA-WASTETUB-MC
(Myra LHS)



● MYRAPLUS-WASTETUB
(Myra+)



● MYRA-WASTETUB-DS
(Myra9)



● MYRA-WASTETUB
(Original)

Workbench 2.2

Workbench 2.2 required to operate 4-channel head.

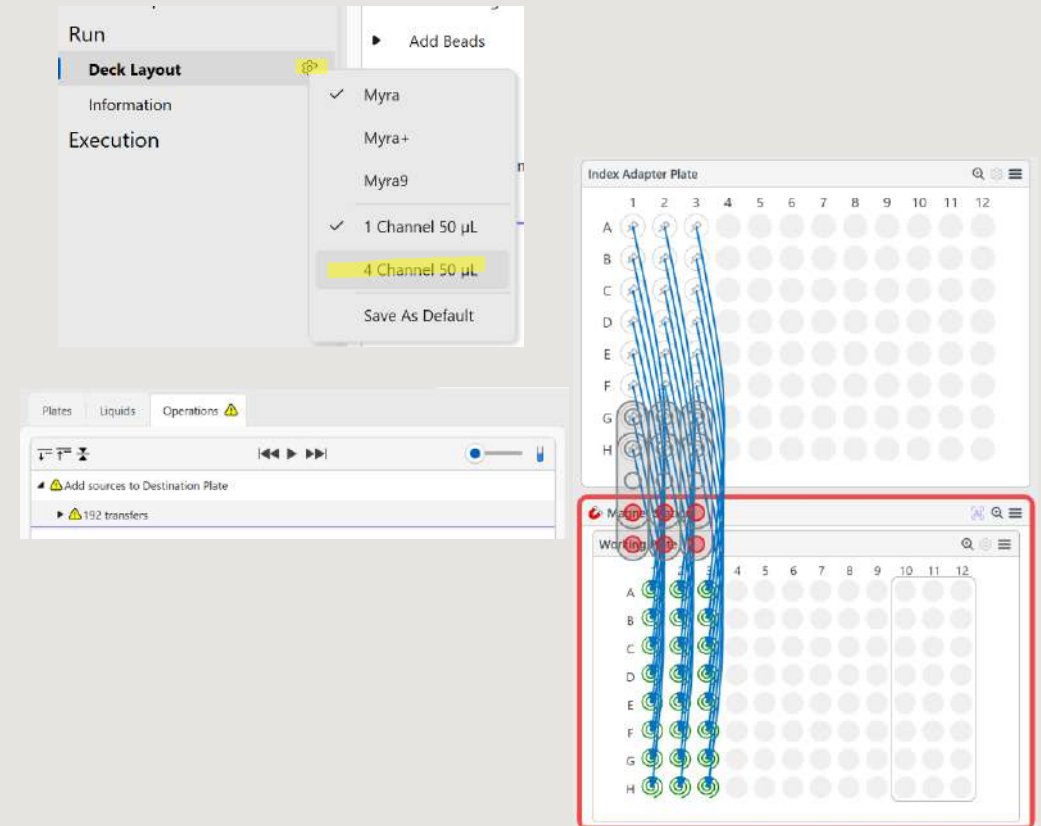
Selection of the 4-channel head occurs through the Deck Layout, robot configuration icon (cog).

Collision events displayed when using the 4-channel head.

- Also displayed in the warnings panel.
- A run cannot start until the deck layout avoids any collisions.
- The most common collision is between low plates and high adaptor blocks like the magnetic station.

MyraScripts need to be updated to allow use of the 4-channel head. Some of the main scripts online will have been converted.

Windows 11 recommendation. Not backward compatible with 2.0.

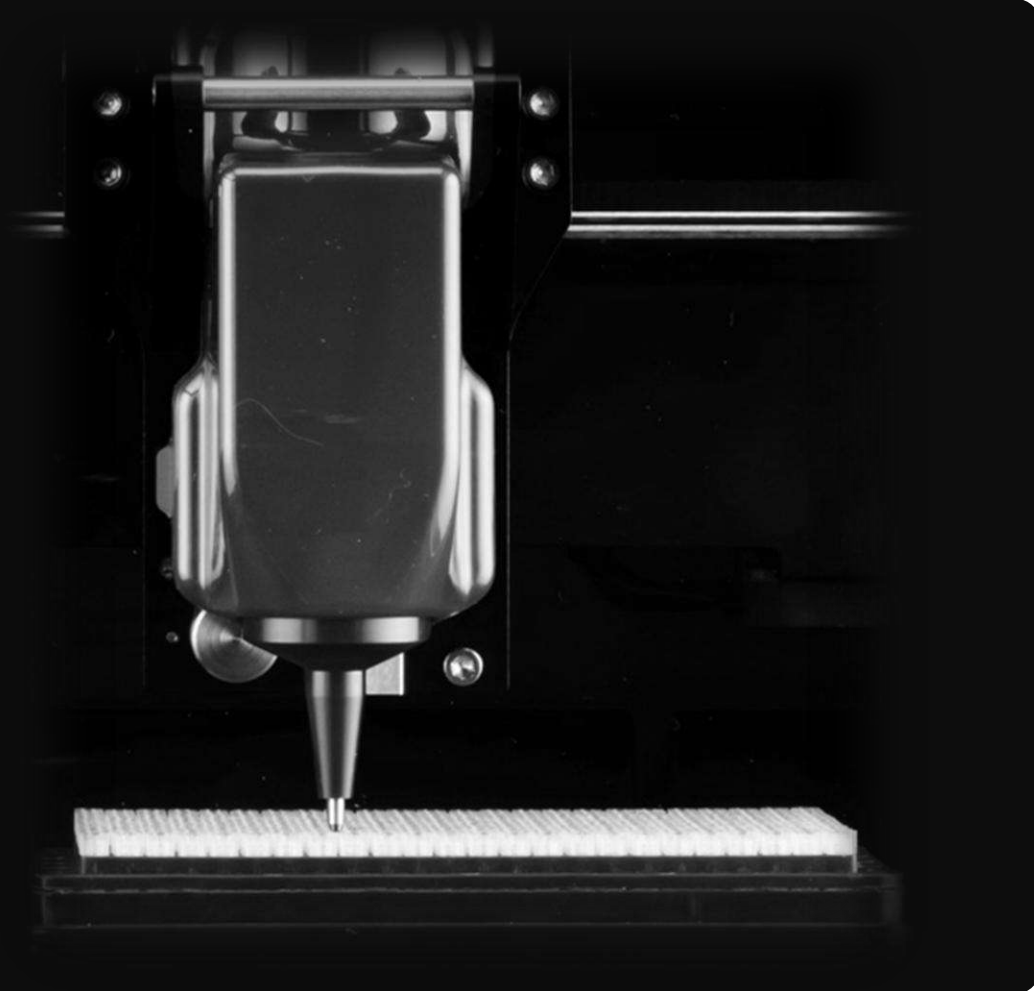


Vector Drive™

Vector Drive reduces tip pick-up force and noise and is required for 4-channel head operation.

Requires a firmware update, followed by:

- Axis calibration (X, Y, Z)
- Tip position recalibration

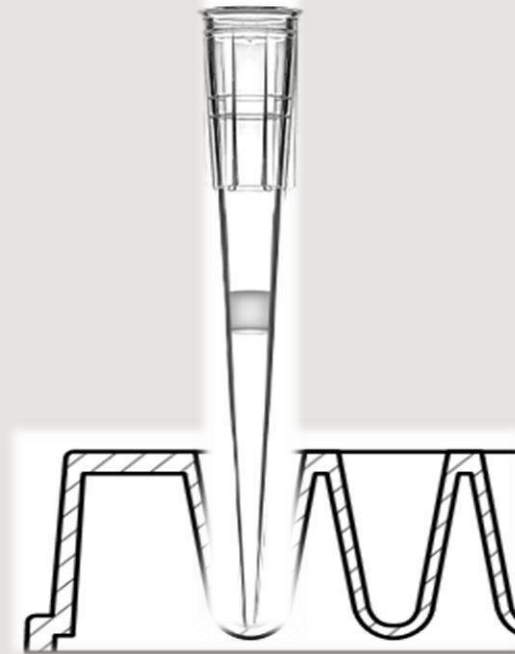


Dynamic Retract™

Dynamic Retract uses pressure sensing to detect when a tip contacts the bottom of a well or tube.

The system:

- Prevents tip-bottom contact issues
- Automatically retracts slightly to relieve pressure
- Prevents over-aspiration or bead carryover
- Improves accuracy during low-volume pipetting and wash steps



Requirements and Constraints

- Reservoir block cannot be placed in A1 position
- Requires 4-channel compatible waste tub and lid
- Collision detection enforced via software
- Only compatible with row C of the multi-purpose block
- Not compatible with 5 mL or greater tubes
- qPCR Setup does not include 4-channel head yet
- Compatible with Workbench version 2.2 only

Purchasing

When purchasing a 4-channel head for existing customers you will need the following:

- Reservoir block with PTAT (MYRA-LBRESERVOIR-6)
- New version waste tub – Myra LHS or Myra+
- Black rack tips (MYRA-TIPS384-50BLK)
- Optional 18 mL reservoir (MYRA-RESERVOIR-18 pack of 30)
- Workbench 2.2 software (FOC)