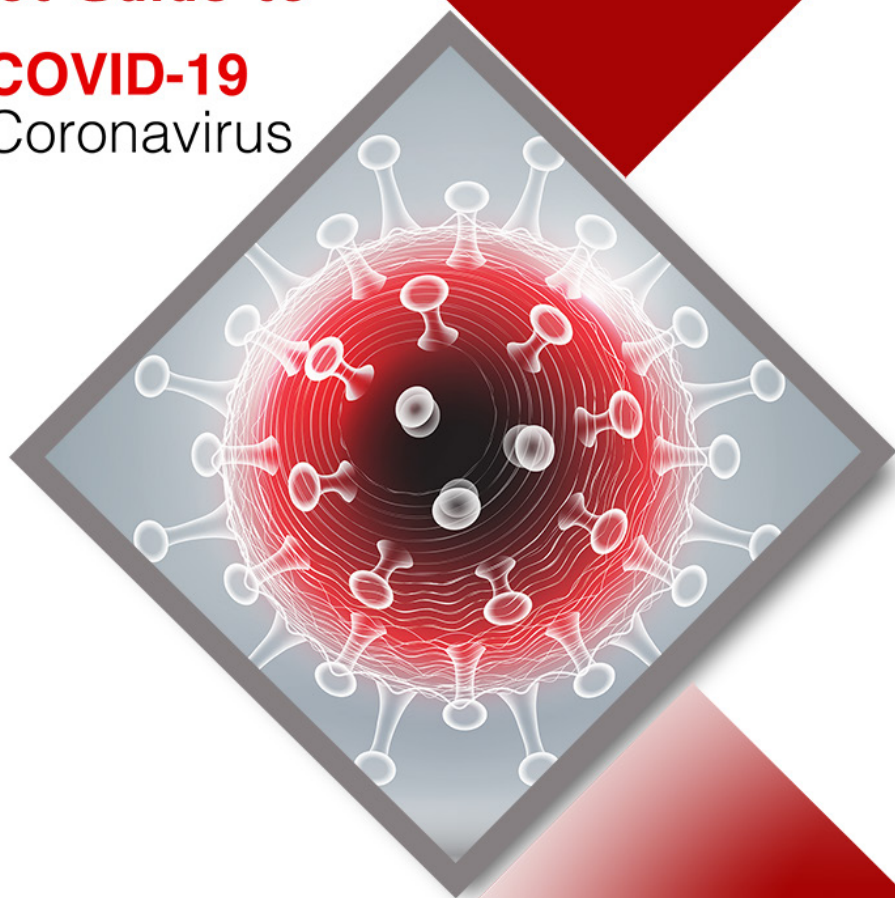


50
YEARS

Product Guide to



COVID-19 Coronavirus

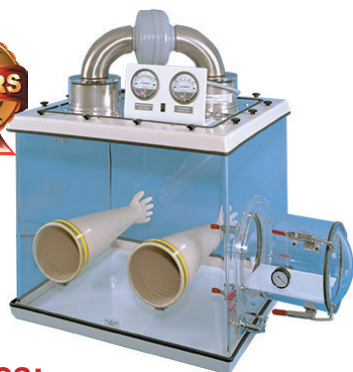


PLAS ■ LABS®

www.PLAS-LABS.com

PLI@Plas-Labs.com

+1.517.372.7177



830-CLC Series

The 830-CLC Series continually recirculates and filters the internal atmosphere of the glove box. It is a negative pressure containment unit. Magnehelic gauges indicate both inner chamber pressure and pressure drop levels across the filters. These gauges indicate when to change the ULPA filters. 99.9995% @ 0.12 μ

Features:

- Three (3) standard sizes.
- Electrical grade outlet strip.
- Continuous negative pressure.
- Custom sizes available.
- Pre-filters are included.
- Completely enclosed blower (fan) unit.
- Two (2) Magnehelic gauges.
- Two (2) optional purging valves.
- Transfer chamber with leveling tray.
- Two (2) 8" round ULPA filters.



Mobile Containment Shield

700-MCS, Modular Containment Shield is a portable testing barrier to separate patient from the clinician.

Features:

- 84" high x 36" deep x 48" wide
- Slip-a-part hinges allow for easy assembly
- One pair, white Ambidextrous gloves.
- Custom sizes available.
- Ships flat
- Shelf (removable)
- Anchor holes

PCR Chambers

825-PCR Series

The 825-Series is a "still air enclosure" which contains both our "Bright Light" system and a U.V. germicidal lamp. The U.V. germicidal system is rated at 254 nm and will decontaminate all exposed surfaces in the interior.

Features:

- "Bright Light" illumination system.
- Two bright white adjustable shelves.
- Front panel is .375" thick (9.5 mm)
- Proximity sensors on doors for safety.
- "Spill Guard" bottom tray for easy cleaning.
- Optional HEPA filtration available.

Part number: **825-PCR/HEPA**

- Automatic timer to activate U.V. sterilization.



Humidity Range: 15-95% Rh

Temperature Range: 16-44° C

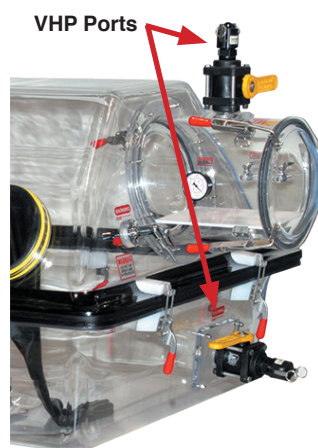
890-THC, Temperature & Humidity Controlled

Completely sealed, automatic temperature and humidity controlled glove box for environmental monitoring for diagnostic test kits. Includes USB Data-logging and multiple alarm conditions.

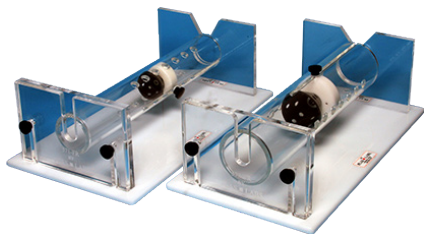


830-VHP SERIES

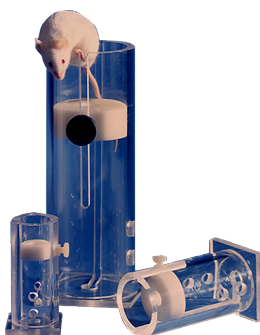
Containment glove box with double ULPA filtration system, transfer chamber, flat side access door, transfer chamber, and VHP "Banjo" connections for decontamination.



SMALL ANIMAL Handling Equipment



Ferret Restrainters



Rodent Restrainters



Injection Cones

Visit www.PLAS-LABS.com for more animal handling products.