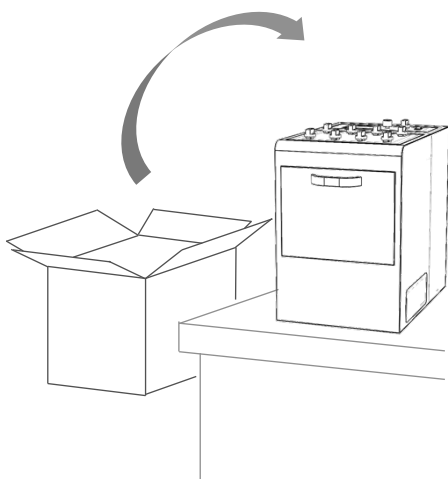
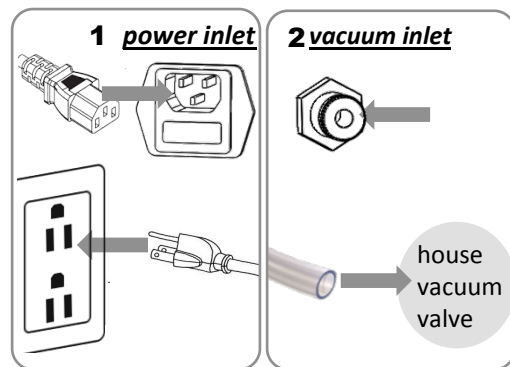
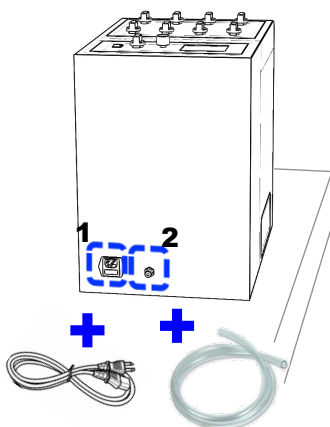


**1** Place **EasyGel** where you want to install it.



**2** Plug the power cable into the **power inlet** and the other end into a power outlet. Connect the urethan tube into **EasyGel vacuum inlet** and the other end into a house vacuum valve or a nitrogen gas tank regulator\*.

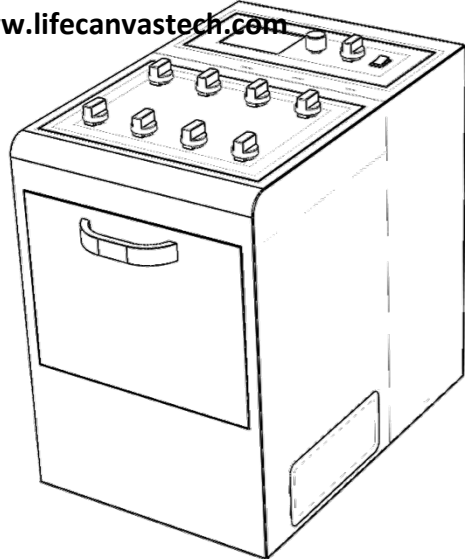


\*It can be also connected to a vacuum pump.

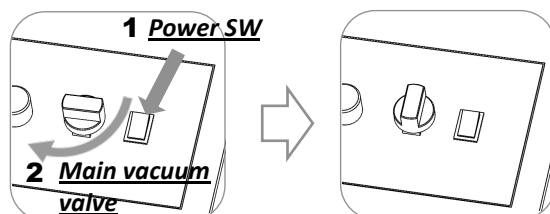
# EasyGel

## Quick Installation

[www.lifecanvastech.com](http://www.lifecanvastech.com)

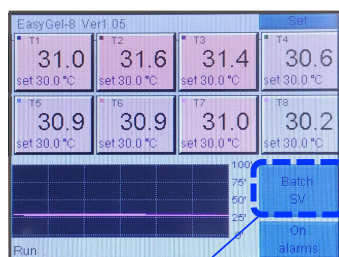


**3** Turn on the **Power SW** and **main vacuum valve**. Check vacuum connections

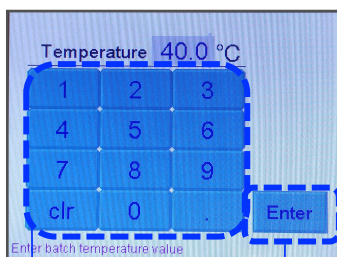


**3** Check vacuum status

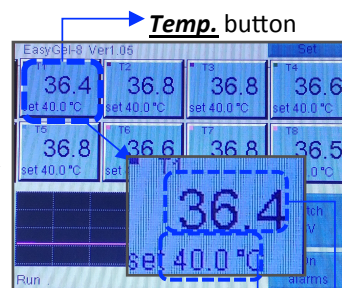
**4** Press the **Batch SV** button to control the temperature and wait until the temperature stabilizes. Press **Temp.** button to set up individual tube temperature.



**1** Press **Batch SV** button

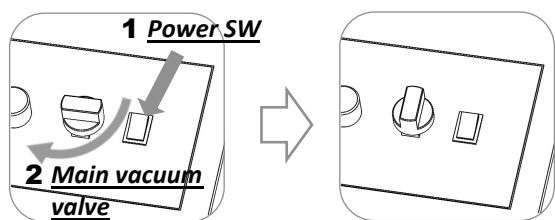


**2** Input target temperature to set-up  
**3** Enter to confirm



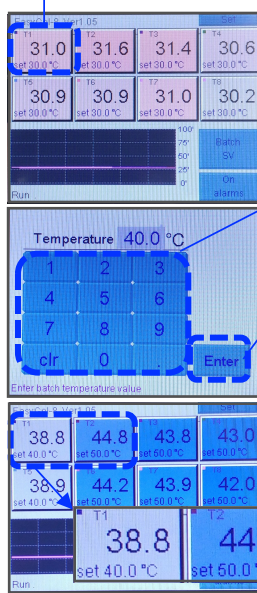
**4** Wait until A=B  
A. Current Temp.  
B. Set-up Temp.

- 1 Turn on the **Power SW** and **main vacuum valve**. Check vacuum connections



3 Check vacuum status

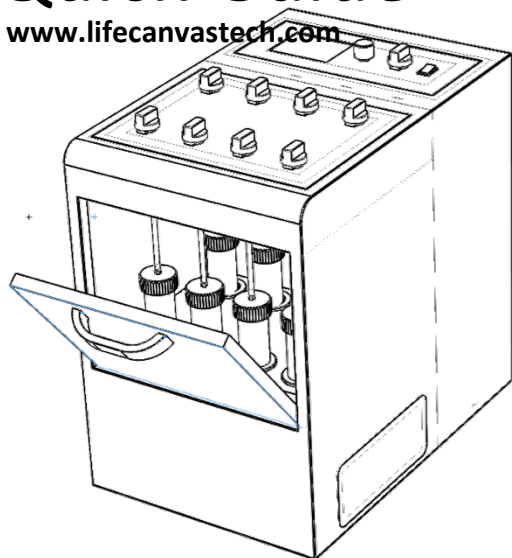
- 2 Press the **Temp.** button to set up the temperature of individual slot and wait until the temperature stabilizes. Use **Batch SV** button for temperature batch set-up for all slots.



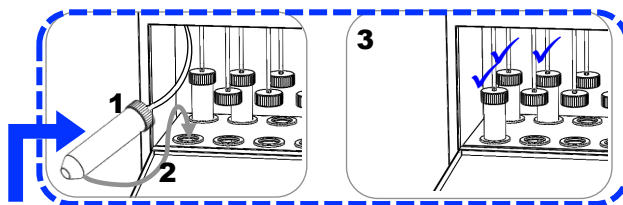
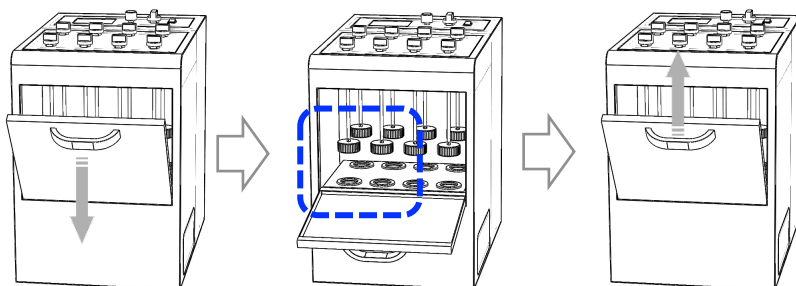
# EasyGel

## Quick Guide

www.lifecanvastech.com

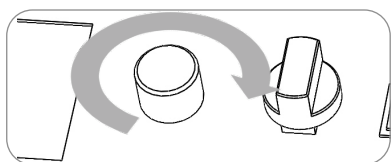


- 3 Open the front door. Place your sample into the tube and connect it with a tube cap. Place it into the device and close the front door



**< Caution >**  
Use 50ml tube only

- 5 Regulate the shaking speed of the sample by adjusting the shaking speed knob and wait until the sample is processed.



- 4 Turn on the individual vacuum valve where the samples are placed

