

ADAM SCC

Automatic Somatic Cell Counter

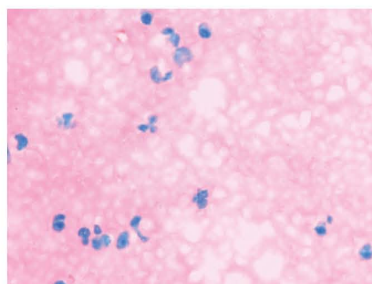
Better way to check milk quality



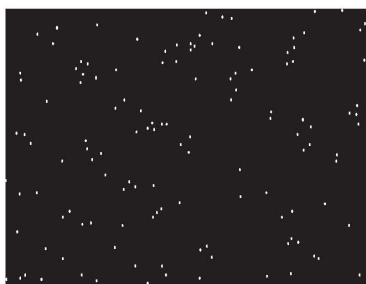


Validation and verification Principal

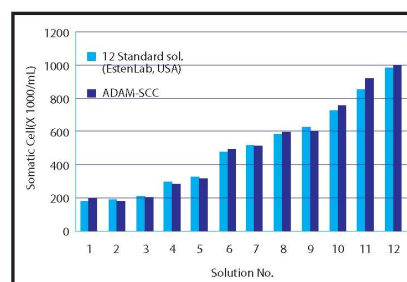
Accuracy : Comparison between ADAM-SCC and Direct Microscopic Somatic Cell Counting
by National Veterinary Research & Quarantine Service (SOUTH KOREA)



Somatic cell image
(DMSCC X1000)



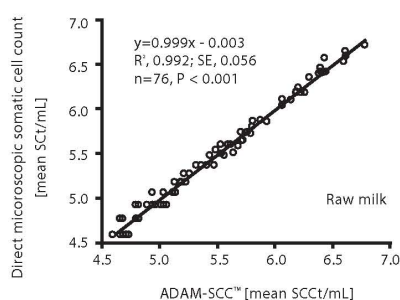
Somatic cell image
(ADAM-SCC)



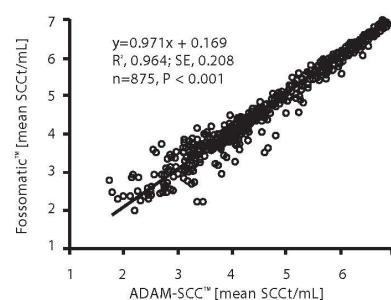
Correlation between 12 standard somatic cell solution (Eastern Lab., USA) and ADAM-SCC

Compatibility : Data correlation between ADAM-SCC and Conventional Equipments
by National Veterinary Research & Quarantine Service (SOUTH KOREA)

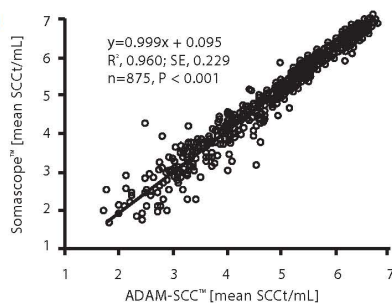
[ADAM-SCC and D]



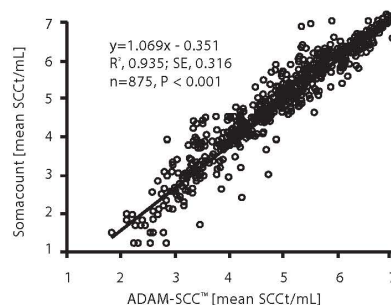
[ADAM-SCC and F]



[ADAM-SCC and S1]



[ADAM-SCC and S2]



ADAM-SCC		Fo***		De***		So***	
SCC(cell/mL)	*CV(%)	SCC(cell/mL)	*CV(%)	SCC(cell/mL)	*CV(%)	SCC(cell/mL)	*CV(%)
100,000	5%	100,000	7%	100,000	12%	100,000	5%
400,000	3%	300,000	5%	400,000	8%	300,000	3%
600,000	2%	500,000	4%	100,000	7%	500,000	2%

*CV (Coefficient of Variation)

[Hardware]

Dimension	220 x 375 x 250mm (8.66 x 14.76 x 9.84inch)
Weight	9kg (19.84lb)
Power	AC100~240V, 50~60Hz
Objective lens	4X
Light source	Green LED
CCD Camera	B/W CCD
Filter	Excitation filter, Dichroic filter, Emission filter

[Experiment]

Measuring range	0.05 ~ 1.15 x 10 ⁶ cells/mL
Analysis time	Max 2.5min for 4tests
Loading Volume	20ul/test (For Somachip 2x) 12ul/test (For Somachip 4x)
Measuring Volumen	8.5ul/test (For Somachip 2x) 3ul/test (For Somachip 4x)

[Ordering Information]

Cat No.	Description	Contents
ADAM-SCC	ADAM-SCC	Main Device, USB cable, Power cord, Key pad
CRS-K01	2 channel Soma kit	Disposable Chips(50pcs, 100tests), Solution(100x100ul)
CRS-K02	4 channel Soma kit	Disposable Chips(100pcs, 400tests), Solution(400x100ul)
ADAM-001	External Video Monitor(Optional)	
ADP-001	Printer(Optional)	



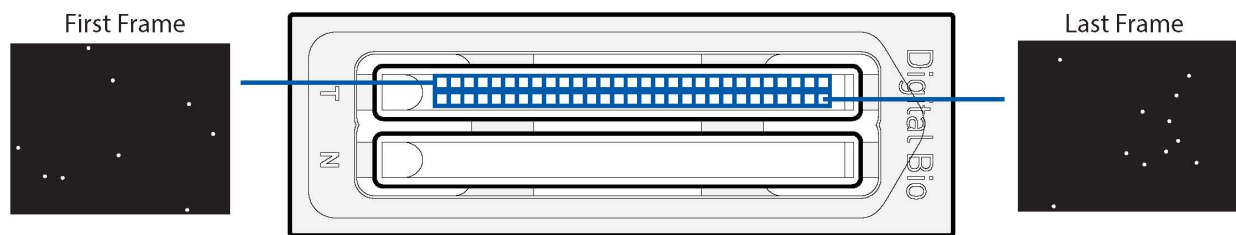
Fully automated somatic cell counter, ADAM-SCC

ADAM-SCC is fully compatible to the Direct Microscopic Somatic Cell Count (DMSCC).

The ADAM-SCC is designed for the performance of accurate somatic cell counting with the unique image cytometer technology. The ADAM-SCC can be used as an ideal equipment for dairies, smaller labs and veterinary institutes working with somatic cell analysis. It will be helpful to the implementation of milk quality control, which favors farmers who want to supply milk with the improved quality.

Principal

ADAM somatic cell counter is a precision microscope integrated with fluorescence optic and image analysis software.



Features

► Accurate & Reliable results

- Compatible to the Direct Microscopic Somatic Cell Count
- Scanning the sample with 60 images (2ch) / 22 images (4ch)
- Optimized image processing software

► Easy of use

- Just 2 step to run
- High speed measurements (analysis tme :Max2.5 min for 4test)

► Low cost to run

- Low maintenance cost
- Calibration free (DMSCC)

► Compact Design

- Light weight and small size (9 kg / W 220 x L 375 x H 250mm)
- Instance print-out available (optional)

