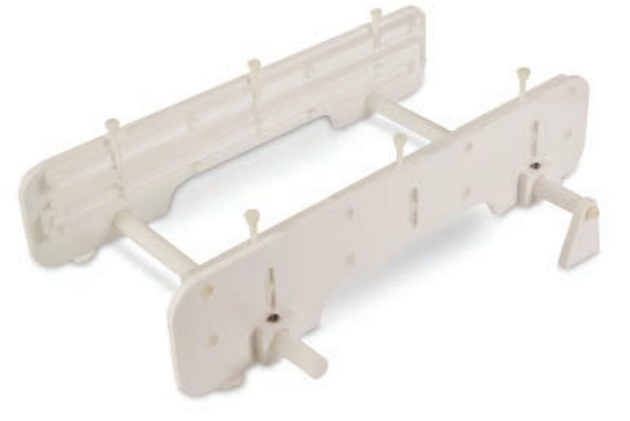


ORDERING INFORMATION	
CSQ20	Large Format Vertical, 20cm wide, glass plates, 0.35mm spacers, 48 sample comb
CSQ20-NG	Glass plates, pk/2 Notched
CSQ20-PG	Glass plates, pk/2 Plain
CSQ20-S0.25	Spacer set 0.25mm
CSQ33	Large Format Vertical, 33cm wide, glass plates, 0.35mm spacers, 48 sample comb
CSQ33-NG	Glass plates, pk/2 Notched
CSQ33-PG	Glass plates, pk/2 Plain
CSQ33-S0.25	Spacer set 0.25mm
CSL-FHS*	Fan heater sensor kit for large format vertical units CSQ20 and CSQ33 220V
CSQ20-S0.35	Spacer set 0.35mm
CSQ20-S1	Spacer set 1mm
CSQ20-S1.5	Spacer set 1.5mm
CSQ33-S0.35	Spacer set 0.35mm
CSQ33-S1	Spacer set 1mm
CSQ33-S1.5	Spacer set 1.5mm
CSQ-FC	Flexi caster for csq20 & csq33
CSL-MGR	Mini Glass Plate Rack for 20x 2mm Plates
CSL-LGR	Large Glass Plate Rack for 10x 5mm Plates

*100V add \$ to stock code when ordering

TECHNICAL SPECIFICATIONS	
Plate dimensions (w x l)	CSQ20 20 x 50cm CSQ33 33 x 45cm
Max sample capacity	CSQ20 48 samples CSQ33 96 samples
Buffer Volume	CSQ20 Min 500ml, Max 1000ml CSQ33 Min 800ml, Max 2000ml
Combs available: No. of teeth Thicknesses	24, 48, 80, 96 0.25, 0.35, 1, 1.5mm

COMB SPECIFICATIONS		
Code	Description	Sample Volume per well
CSQ20-0.25-24	Comb 24 sample, 0.25mm thick, Sharks tooth	7µl
CSQ20-0.25-48	Comb 48 sample, 0.25mm thick, Sharks tooth	3µl
CSQ33-0.25-48	Comb 48 sample, 0.25mm thick, Sharks tooth	7µl
CSQ33-0.25-96	Comb 96 sample, 0.25mm thick, Sharks tooth	3µl
CSQ20-0.35-24	Comb 24 sample, 0.35mm thick, Sharks tooth	9µl
CSQ20-0.35-48	Comb 48 sample, 0.35mm thick, Sharks tooth	5µl
CSQ33-0.35-48	Comb 48 sample, 0.35mm thick, Sharks tooth	9µl
CSQ33-0.35-96	Comb 96 sample, 0.35mm thick, Sharks tooth	5µl
CSQ20-1-24	Comb 24 sample, 1mm thick, Square tooth	40µl
CSQ20-1-48	Comb 48 sample, 1mm thick, Square tooth	20µl
CSQ33-1-48	Comb 48 sample, 1mm thick, Square tooth	35µl
CSQ33-1-80	Comb 80 sample, 1mm thick, Square tooth	20µl
CSQ20-1.5-24	Comb 24 sample, 1.5mm thick, Square tooth	60µl
CSQ20-1.5-48	Comb 48 sample, 1.5mm thick, Square tooth	30µl
CSQ33-1.5-48	Comb 48 sample, 1.5mm thick, Square tooth	50µl
CSQ33-1.5-80	Comb 80 sample, 1.5mm thick, Square tooth	30µl



FEATURES:

- Run up to 96 samples
- Enhanced gel heat homogenisation
- Variable low or high buffer volumes
- 20 x 50cm or 33 x 45cm formats



Plate Racks

These sturdy racks are designed for safe drying and storage of glass plates. The small rack can hold up to 20x 2mm thick plates while the larger rack can accommodate up to 10x 5mm thick glass plates.

Large Format Vertical

Ideal for a variety of large format vertical gel applications, these units offer advanced features for enhancing gel resolution and ease of use, essential when handling gels of this size. Each unit contains ultra soft silicone seals for easy plate sealing and trouble free runs, even over extended run times.

Resolution is enhanced by using an aluminium heat sink plate, essential for even sample migration. Added convenience is provided by a removable lower buffer tank and upper buffer drainage tap.

Special buffer chambers allow either low buffer volumes to be used for economy or high buffer volumes to be used for extended runs.

A wide range of interchangeable comb and spacer options allows a large number of techniques to be easily accomplished including; DNA Sequencing, 2-D analysis, Micro-satellite analysis, DNA fingerprinting, Gel shift assays, Single-Strand Conformation Polymorphism (SSCP), Heteroduplex and Oligonucleotide analysis.

TYPICAL APPLICATIONS

DNA Sequencing, 2-D analysis, Micro-satellite analysis, DNA fingerprinting, Gel shift assays, Single-Strand Conformation Polymorphism (SSCP), Heteroduplex and Oligonucleotide analysis

