

35mm Cell Culture Dishes

NEST cell culture dishes are ideal for all types of culturing where microscopic observation is required. Numeric marks on the bottom of each dish allow users to identify the location of cells.

Features

1. High clarity polystyrene
2. Flat transparent surface for distortion-free observation
3. Vacuum plasma TC treatment, excellent cell adherence
4. Stackable for easy storage and handling
5. Sterilized by E-Beam
6. Non-pyrogenic

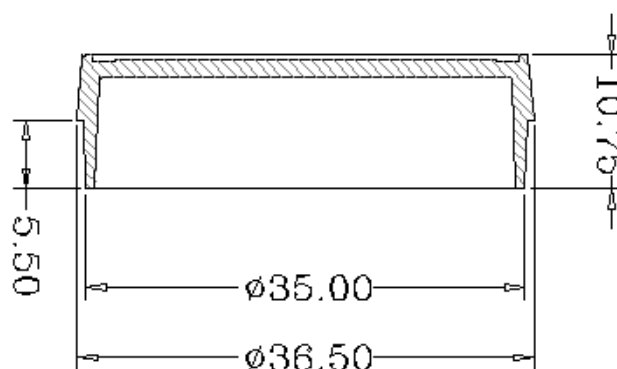
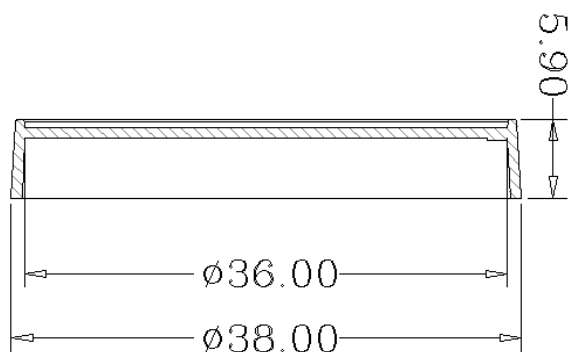
Description

Temperature Range : Approx.-86 to+64℃
 Shelf Life : 3 Years after date of production (ensure package is in good)
 Sterile : Yes

Product Range

Cat.No.	Spec (mm)	Cell Growth Area (cm ²)	Rcommended Medium Volume (mL)	/Pack	/Case
706001	35*9	9	1.8-2.7	20	500

Technical Drawing



NEST China	Tel	: 0510-6878 8698 / 6878 8718	NEST USA	Tel	: +1-732-381-0268
	Email	: info@nest-wuxi.com		Email	: info@nestscientificusa.com
	Website	: www.cell-nest.com		Website	: www.nestscientificusa.com
	Add	: No.230, xida road, new district, Wuxi, Jiangsu, China		Add	: 1592 Hart St., Rahway, NJ07065, USA